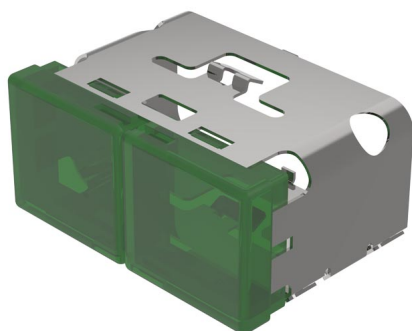


# EAO – Your Expert Partner for Human Machine Interfaces

## 03-902.5/5 - Lens single-headed bi-colour for pushbutton single-headed

### 03-902.5/5 - Lens single-headed bi-colour for pushbutton single-headed



*Attention: The preview is based on a sample product. This can differ from your current configuration.*

#### Mounting

Design flush

#### Other Attributes

Dimension 18 x 38 mm

Weight 0,010 kg

#### Operating-/Indication part

Lens optics translucent

Lens material Plastic

Lens colour green-green ribbed

Lens illumination illuminative

Lens profile flat