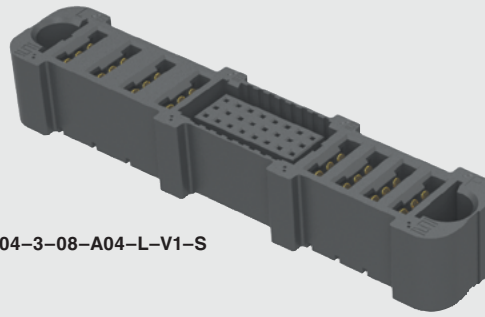




POWER™ EXTreme
STRIP Ten60



ET60S-D04-3-08-A04-L-V1-S

EXTreme Ten60Power™ SOCKET

Mates with:
ET60T

SPECIFICATIONS

For complete specifications and recommended PCB layouts see www.samtec.com?ET60S

Insulator Material:

Black LCP

Terminal Material:

Signal: Copper Alloy

Power: Copper Alloy

Plating:

Au or Sn over

50 μm (1.27 μm) Ni

Current Rating:

Power: 60 A max per blade

(2 pins powered)

Signal: 2.8 A max

(6 pins powered)

Operating Temp Range:

-40 °C to +105 °C

RoHS Compliant:

Yes

PROCESSING

Lead-Free Solderable:

Yes

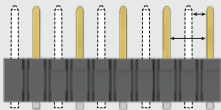
RECOGNITIONS

For complete scope of recognitions see www.samtec.com/quality



FILE NO. E111594

CREEPAGE AND CLEARANCE



Selectively loading contacts achieves customer specific creepage and clearance requirements.
Contact asp@samtec.com

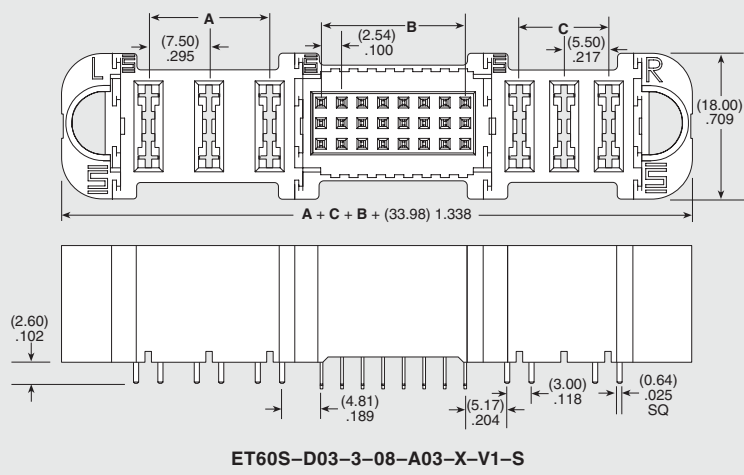
Notes:

Some lengths, styles and options are non-standard, non-returnable.

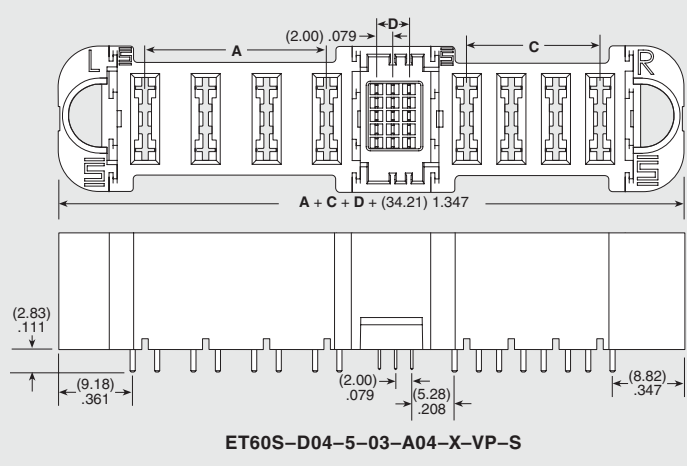
EXTreme Ten60Power™ is a trademark of Molex Incorporated and is dual sourced by Molex®

ET60S	POWER OPTION (RIGHT)	ROWS	SIGNAL POSITIONS PER ROW
	<p>-AXX = AC Power Positions (-02, -03, -04, -05, -06 positions only)</p> <p>-DXX = DC Power Positions (-02, -03, -04, -05, -06, -07, -08, -09, -10 positions only)</p> <p>-SXX* = Split Power</p> <p>-000 = No Power</p>	<p>-0 = No Signal</p> <p>-3 = 3 Rows</p> <p>-5 = 5 Rows</p>	<p>-00 = No Signal</p> <p>-08 = 3 Row only</p> <p>-01, -02, -03, -04, -05, -06, -07, -08 = 5 Row only</p>

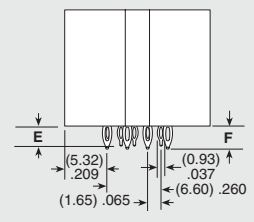
Note: -SXX* -T* are Preliminary



POWER POSITIONS (LEFT)	POWER POSITIONS (RIGHT)	A AC POWER	C DC POWER
-02	-02	(7.50) .295	(5.50) .217
-03	-03	(15.00) .591	(11.00) .433
-04	-04	(22.50) .886	(16.50) .650
-05	-05	(30.00) 1.181	(22.50) .886
-06	-06	(37.50) 1.476	(27.50) 1.083
-07	-07	N/A	(33.00) 1.299
-08	-08	N/A	(38.50) 1.516
-09	-09	N/A	(44.00) 1.732
-10	-10	N/A	(49.50) 1.949



TAIL	3 ROWS		5 ROWS	
	E	F	E	F
-VP	(3.28) .129	(2.83) .111	(2.83) .111	(2.50) .098
-V1		(2.60) .102		N/A

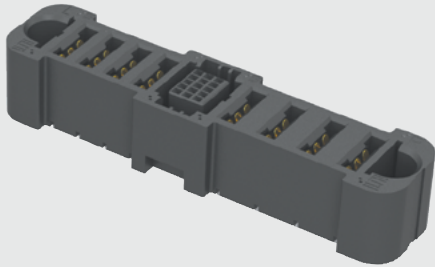


Due to technical progress, all designs, specifications and components are subject to change without notice.

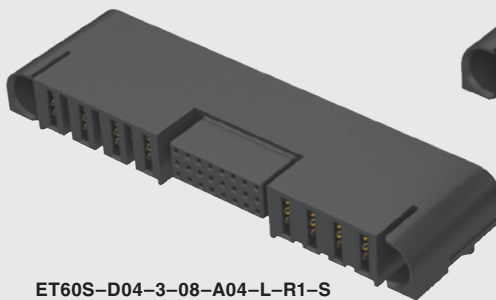
WWW.SAMTEC.COM

All parts within this catalog are built to Samtec's specifications. Customer specific requirements must be approved by Samtec and identified in a Samtec customer-specific drawing to apply.

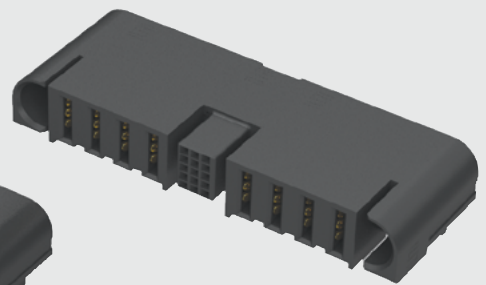
ET60S-A04-5-03-D04-L-VP-S



ET60S-D04-3-08-A04-L-R1-S



ET60S-D04-5-03-A04-S-R1-S



ET60S SERIES

POWER OPTION (LEFT)

-AXX

= AC Power Positions
(-02, -03, -04, -05, -06 positions only)

-DXX

= DC Power Positions
(-02, -03, -04, -05, -06, -07, -08, -09, -10 positions only)

-SXX*

= Split Power

-000

= No Power

Note:
-SXX* -T* are Preliminary

PLATING

-L

= 10 μ" (0.25 μm) Gold on contact,
Matte Tin on tail
(Not available for 5 rows)

-S

= 30 μ" (0.76 μm) Gold on contact,
Matte Tin on tail

TAIL

-VP

= Vertical Press-fit

-V1

= Vertical through-hole
(Use with (1.60 mm) .062" thick card
(-0 and -3 Row only)

-R1

= Right-angle through-hole
(Use with (1.60 mm) .062" thick card)

GUIDE POST

(Required callout)

-S

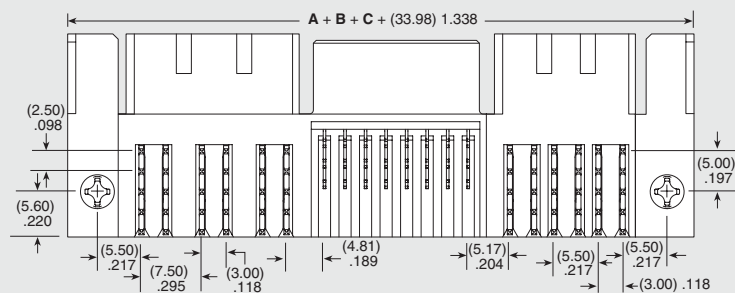
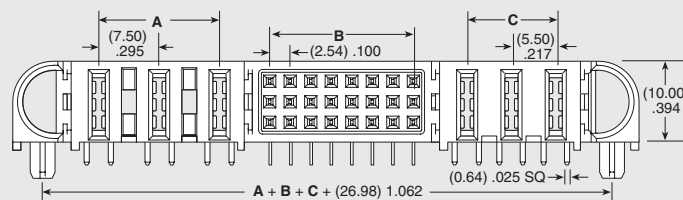
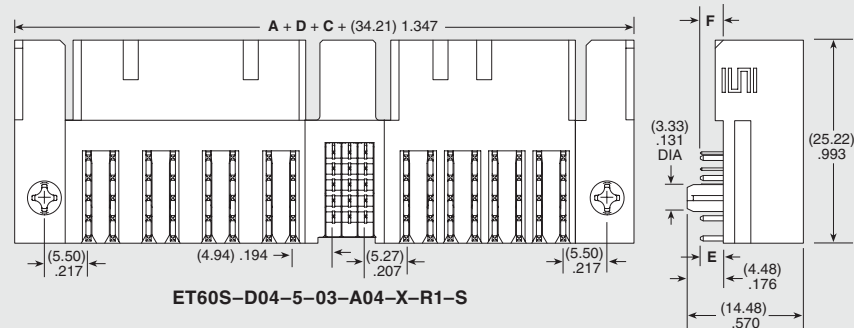
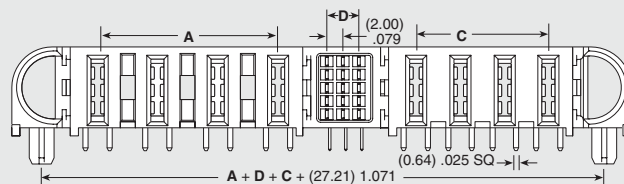
= Side Guide Post

-T*

= Top Guide Post

SIGNAL POSITIONS PER ROW (3 Row)	B	SIGNAL POSITIONS PER ROW (5 Row)	D
-08	(17.78) .700	-01	N/A
		-02	(2.00) .079
		-03	(4.00) .157
		-04	(6.00) .236
		-05	(8.00) .315
		-06	(10.00) .394
		-07	(12.00) .472
		-08	(14.00) .551

TAIL	E	F
-R1	(2.84) .112	



ET60S-D03-3-08-A03-X-R1-S

Due to technical progress, all designs, specifications and components are subject to change without notice.

WWW.SAMTEC.COM

All parts within this catalog are built to Samtec's specifications.
Customer specific requirements must be approved by Samtec and identified in a Samtec customer-specific drawing to apply.