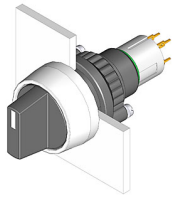


# EAO – Your Expert Partner for Human Machine Interfaces

## 14-520.0360 - Selector switch actuator 2 positions

### 14-520.0360 - Selector switch actuator 2 positions



*Attention: The preview is based on a sample product. This can differ from your current configuration.*

#### Mounting

Mounting cut-out Ø 22,3 mm  
Design raised

#### Front

Front dimension Ø 29 mm  
Front shape round  
Front bezel colour natural anodized  
Front bezel material Aluminium

#### Other Attributes

Weight 0,025 kg

#### Operating-/Indication part

Lever illumination non-illuminative  
Lever colour black  
Lever material Plastic  
Lever shape short  
Switching angle 90° right

#### IP-Rating

Front protection IP67

#### Connection Method

Terminal Universal 2.0 x 0.5 mm

#### Actuator

Switching action Rest - Maintain

#### Switching element

Rotary positions 2  
Switching system Low-level element  
Switching current 0.1 A  
Switching voltage 42 V AC/DC  
Contacts 2 NO  
Contact material gold-plated silver

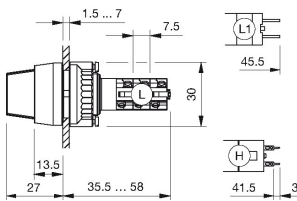
#### Function

Selector switch

# EAO – Your Expert Partner for Human Machine Interfaces

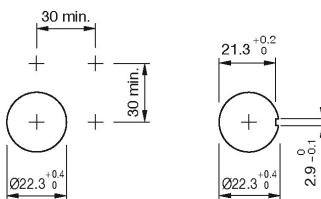
14-520.0360 - Selector switch actuator 2 positions

## Dimensions



H = Universal terminal 2.0 x 0.5 mm

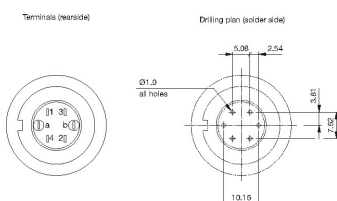
## Mounting cut-outs



## Wiring diagram



## Component layout



## Additional information

The colour of anodized aluminium parts can vary due to technical production reasons

## Legend

Contacts: NO = Normally open

Switching action: A = Rest, C = Maintained

# EAO – Your Expert Partner for Human Machine Interfaces

14-520.0360 - Selector switch actuator 2 positions

## Switching positions

