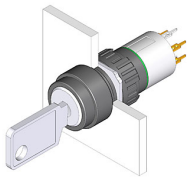


# EAO – Your Expert Partner for Human Machine Interfaces

## 51-438.036D - Keylock switch 2 positions

### 51-438.036D - Keylock switch 2 positions



*Attention: The preview is based on a sample product. This can differ from your current configuration.*

#### Mounting

Mounting cut-out Design  $\varnothing$  16 mm raised

#### Front

Front dimension  $\varnothing$  18 mm  
Front shape round

#### Other Attributes

Weight 0,017 kg

#### Operating-/Indication part

Switching angle 42° right

#### IP-Rating

Front protection IP65

#### Connection Method

Terminal Universal 2.0 x 0.5 mm

#### Actuator

Switching action Rest(a) - Momentary

#### Switching element

Rotary positions 2  
Switching system Low-level element  
Switching voltage 42 V AC/DC  
Switching current 0.1 A  
Contacts 1 NC + 1 NO  
Contact material

#### Function

Keylock switch



# EAO – Your Expert Partner for Human Machine Interfaces

51-438.036D - Keylock switch 2 positions

## Switching positions

