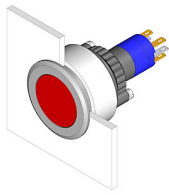


# EAO – Your Expert Partner for Human Machine Interfaces

## 14-131.022 - Illuminated pushbutton actuator

### 14-131.022 - Illuminated pushbutton actuator



*Attention: The preview is based on a sample product. This can differ from your current configuration.*

#### Mounting

Design	flush
Mounting cut-out	Ø 30,5 mm

#### Front

Front dimension	Ø 35 mm
Front shape	round

#### Other Attributes

Weight	0,013 kg
--------	----------

#### Operating-/Indication part

Lens illumination	illuminative
-------------------	--------------

#### IP-Rating

Front protection	IP67
------------------	------

#### Connection Method

Terminal	Solder 2.8 x 0.5 mm
----------	---------------------

#### Actuator

Switching action	Momentary
Housing colour	black
Housing material	Plastic

#### Switching element

Switching system	Snap-action switching element
Switching current	5 A
Contacts	1 NC + 1 NO
Contact material	
Switching voltage	250 V AC

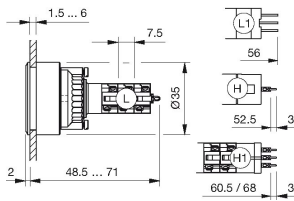
#### Function

Illuminated pushbutton	
------------------------	--

# EAO – Your Expert Partner for Human Machine Interfaces

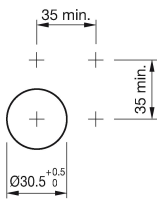
14-131.022 - Illuminated pushbutton actuator

## Dimensions

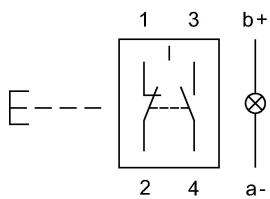


L1 = Solder/Plug-in terminal 2.8 x 0.5 mm

## Mounting cut-outs



## Wiring diagram



## Legend

Contacts: NC = Normally closed, NO = Normally open  
Switching action: B = Momentary