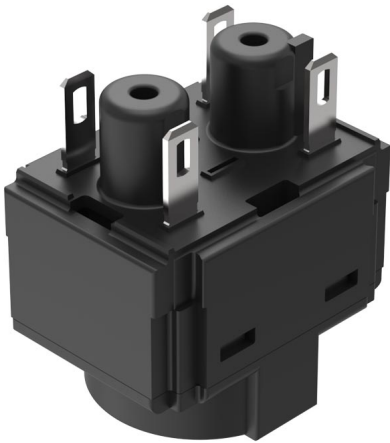


# EAO – Your Expert Partner for Human Machine Interfaces

61-8755.17 - Switching element for emergency-stop switch, foolproof EN IEC 60947-5-5

## 61-8755.17 - Switching element for emergency-stop switch, foolproof EN IEC 60947-5-5



*Attention: The preview is based on a sample product. This can differ from your current configuration.*

### Other Attributes

Weight 0,008 kg

### Connection Method

Terminal Solder 2.8 x 0.5 mm

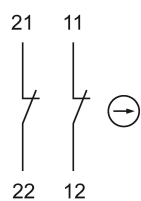
### Switching element

Switching current 5 A  
Switching system Slow-make switching element  
Contacts 2 NC  
Contact material Silver  
Switching voltage 250 V AC/DC

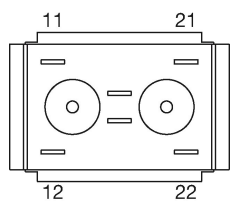
# EAO – Your Expert Partner for Human Machine Interfaces

61-8755.17 - Switching element for emergency-stop switch, foolproof EN IEC 60947-5-5

## Wiring diagram



## Component layout



## Legend

Contacts: NC = Normally closed