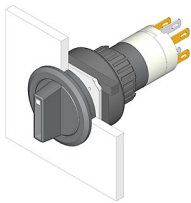


EAO – Your Expert Partner for Human Machine Interfaces

52-271.022 - Selector switch actuator 2 positions round, flush design

52-271.022 - Selector switch actuator 2 positions round, flush design



Attention: The preview is based on a sample product. This can differ from your current configuration.

Mounting

Design flush

Other Attributes

Weight 0,006 kg

Operating-/Indication part

Switching angle 90° right

Lever illumination

Lever shape short

Lever material Plastic

IP-Rating

Front protection IP65

Connection Method

Terminal Solder 2.8 x 0.5 mm

Actuator

Switching action Rest - Maintain

Switching element

Rotary positions 2

Switching system Snap-action switching element

Contacts 1 NC + 1 NO

Switching current 5 A

Contact material gold-plated silver

Switching voltage 250 V AC

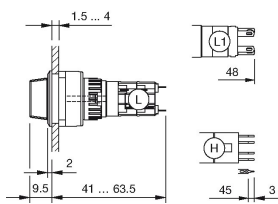
Function

Selector switch

EAO – Your Expert Partner for Human Machine Interfaces

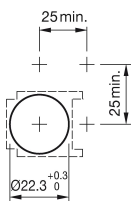
52-271.022 - Selector switch actuator 2 positions round, flush design

Dimensions

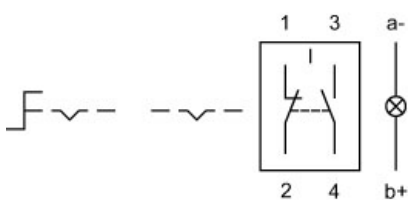


H = Universal terminal 2.0 x 0.5 mm

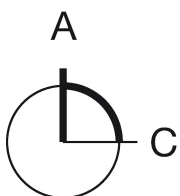
Mounting cut-outs



Wiring diagram



Switching positions



Additional information

illuminative

Legend

Contacts: NC = Normally closed, NO = Normally open
Switching action: A = Rest, C = Maintained