

Piezo Switch N.O.



PSE M24 RI red

PSE M24 RI Multicolor

See below:

Approvals and Compliances

Description

- Available in version Standard and lettered, from diameter 22 mm with Point Illumination or Ring Illumination
- Multicolor: flexible input voltage from 5 - 28 VDC at constant brightness
- with color combination RGB and RGY
- 7 possible colors with RGB configuration
- 3 possible colors with RGY configuration Assembly by mounting with nut
- Pins, Wire, Crimp Terminal male or Cable with Faston

Unique Selling Proposition

- Variety of design options regarding size, colour, shape, connection or lettering
- High reliability, long lifetime with more than 20 mill. actuations
- With multicolor ring illumination

Characteristics

- Housing material types: aluminum or stainless steel, ring illuminated version additionally made of polyamide
- For use in harsh environments, both indoors and outdoors (see technical data)

Other versions on request

- switch for longer switching signal duration, type: PSE IV
- switch for explosion proof applications, type: PSE EX
- switch with enhanced vandal proof protection, type: PSE HI
- as keypad, type: Piezo Keypad

References

- Alternative: switch with prolonged signal: [PSE AE 16](#); [PSE AE 30](#)
- Alternative: switch vandal improved: [PSE HI 22](#)
- Alternative: switch for EX proved applications: [PSE EX 16](#); [PSE EX 19](#); [PSE EX 22](#)
- Alternative: Other diameter: [PSE NO 16](#); [PSE NO 19](#); [PSE NO 22](#)
- Alternative: Other diameter
- Alternative: Piezo key pads: [Piezo Keypads](#)

Weblinks

- [html-datasheet](#), [General Product Information](#), [CAD-Drawings](#), [Product News](#), [Detailed request for product](#), [Microsite](#)

Technical Data

Electrical Data

| | |
|-------------------------------------|--|
| Switching Function | N.O. |
| Supply Voltage | 12 / 24 VDC Ring Illumination 24 VDC Point Illumination |
| Supply Voltage Multicolor | 5 - 28 VDC |
| Switching Voltage | max. 42 / 60 VAC/DC |
| Switching Current | max. 100 mA |
| Electrical Rating | 1 W |
| Lifetime | 20 million actuations at Rated Switching Capacity |
| Switch Resistance OFF | > 10 MΩ |
| Switch Resistance ON | < 20 Ω actuated (Ta = 25°C) |
| Capacity | 5 nF |
| N.O. Closing Impulse Duration | 20- 1000 ms depending on actuating force, time and speed |
| Contact Configuration | free polarity |
| RGB Illumination | |
| Current Consumption (max per color) | 16.5 mA @ 5 VDC |
| | 8.2 mA @ 12 VDC |
| | 5.5 mA @ 24 VDC |
| | 4.8 mA @ 28 VDC |

Mechanical Data

| | |
|-------------------|------------------------------|
| Actuating Force | ≤ 3 N at ambient temperature |
| Actuating Travel | 0.002 mm |
| Shock Protection | IK 02 |
| Tightening Torque | 2.5 Nm |

Climatical Data

| | |
|--|---|
| Operating Temperature | -40 to +85 °C |
| Storage Temperature | -40 to +85 °C |
| IP-Protection | IP 67 acc. to IEC 60529, IP 69K acc. to DIN 40050-9 |
| Environmental Assessment | 55°C / 93% r.h. acc. to DIN EN 60068-2-30 |
| Salt Spray Test (acc. to DIN 50021-SS) | 24 h / 48 h / 96 h Residence Time |

Material





| | |
|--|--|
| Housing (depending on type) | Stainless Steel, Aluminium anodized, Polyamide |
| Actuating Area / Insert (with Ring Illumination) | Stainless Steel, Aluminum anodized |
| Illuminated Ring (Ring Illumination) | Polyamide |

Approvals and Compliances

Detailed information on product approvals, code requirements, usage instructions and detailed test conditions can be looked up in [Details about Approvals](#)


Approvals

Approval Reference Type:

| Approval Logo | Certification Body | Description |
|--|--------------------|--|
|  | EU | EMC: EMC directive 2004/108/EWG |
|  | | DGVV Test Certificate: FW 11040 Requirements for Food Processing Equipment |
|  | | MIL-STD Certificate Number: 202F Method 107G, 202F Method 204D, 202F Method 213B, 416D Method RS103, 810E Method 501.3, 810E Method 502.3, 810E Method 507.3 |
|  | | VDE Certificate Number: DIN EN 61000-4-2, DIN EN 61000-4-4, DIN EN 61000-4-5 |



Application standards

Application standards where the product can be used

| Organization | Design | Standard | Description |
|--|--------------------------------|--------------|---|
|  | Designed for applications acc. | IEC/UL 60950 | IEC 60950-1 includes the basic requirements for the safety of information technology equipment. |

Compliances

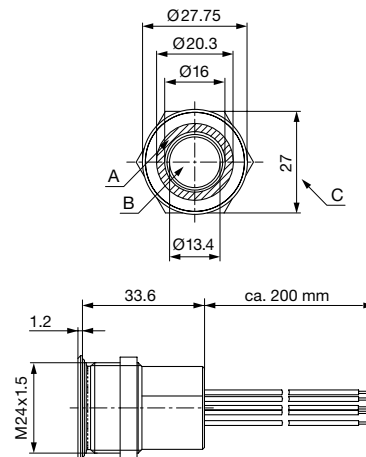
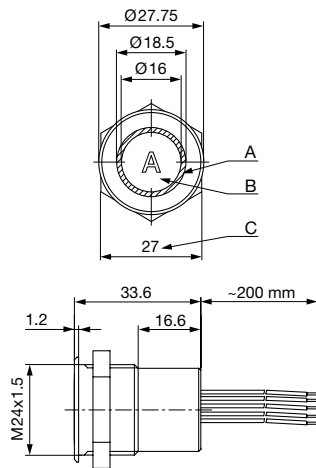
The product complies with following Guide Lines

| Identification | Details | Initiator | Description |
|--|---------|-------------|---|
|  | RoHS | SCHURTER AG | EU Directive RoHS 2011/65/EU |
|  | REACH | SCHURTER AG | On 1 June 2007, Regulation (EC) No 1907/2006 on the Registration, Evaluation, Authorization and Restriction of Chemicals 1 (abbreviated as "REACH") entered into force. |

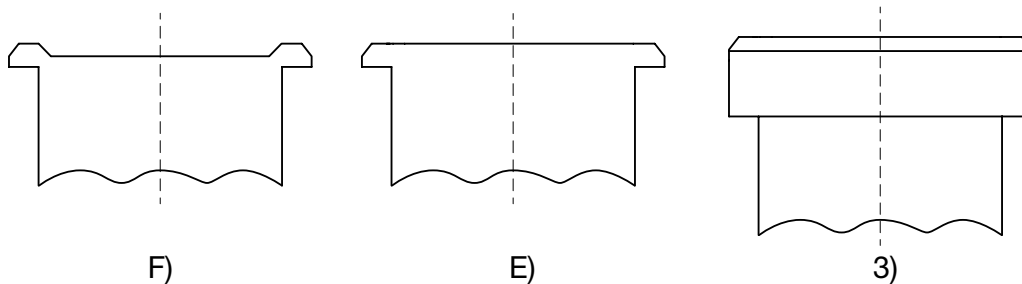
Dimension [mm]

PSE M24 RI

PSE M24 RI Multicolor with wires and with finger guidance



Design actuating area



Legend:

- A = Illumination Area
- B = Actuating Area
- C = Width Across Flats
- I = Crimp Terminal male 6.3 x 0.8
- PI = Point Illumination
- RI = Ring Illumination

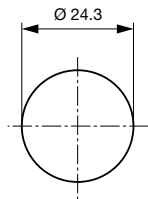
Lettering:

- either with/without lettering
- position of the connections with respect to the position of the lettering is not defined

- F) with finger guidance
- E) without finger guidance
- 3) elevated front design: M19 (standard, others on request)

Dimension

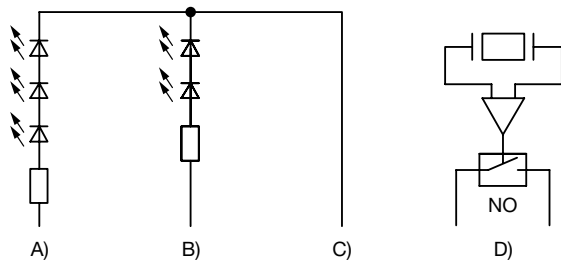
PSE M24



Drilling diagram

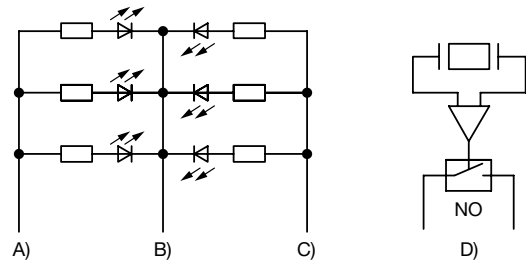
Diagrams

PSE M24 RI / PSE M27 RI / PSE M30 RI, 12/24 V



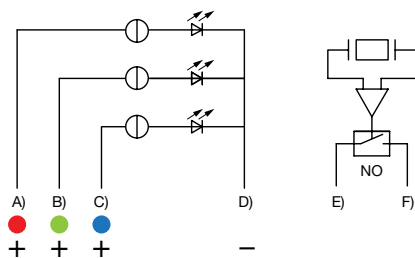
- A) Cable 1 (color of the LEDs), Supply voltage first LED group
- B) Cable 3 (color of the LEDs), Supply voltage second LED group
- C) Cable 2 (black), Common mass of both LED groups
- D) Cable 4 and 5 (white), Input and output PSE switch

PSE M24 RI / PSE M27 RI / PSE M30 RI, 5 V



- A) Cable 1 (color of the LEDs), Supply voltage first LED group
- B) Cable 2 (black), Common mass of both LED groups
- C) Cable 3 (color of the LEDs), Supply voltage second LED group
- D) Cable 4 and 5 (white), Input and output PSE switch

PSE M22 / M24 / M27 / M30 RI Multicolor



- A) Cable 1 (color of the LED), Supply voltage
- B) Cable 2 (color of the LED), Supply voltage
- C) Cable 3 (color of the LED), Supply voltage
- D) Cable 4 (black), Common mass
- E) Cable 5/6 (white), Input and output PSE switch
- F) Cable 5/6 (white), Input and output PSE switch

Illumination options for Multicolor

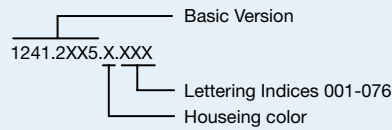
| Lighting type | Active terminal A) ● | Active terminal B) ● | Active terminal C) ● | Resulting Color |
|---------------------------|----------------------|----------------------|----------------------|-----------------|
| Multicolor Singlecolor | A | | | Red ● |
| Multicolor Singlecolor | | B | | Green ● |
| Multicolor Singlecolor | | | C | Blue ● |
| Multicolor RGB Additive 2 | A | B | | Yellow ● |
| Multicolor RGB Additive 2 | A | | C | Magenta ● |
| Multicolor RGB Additive 2 | | B | C | Cyan ● |
| Multicolor RGB Additive 3 | A | B | C | White ○ |

Lettering

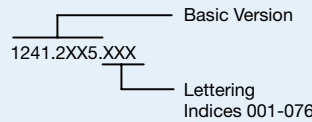
The last three digits in the order number define the lettering:

| | |
|---------|----------------------|
| 001-076 | Standard Lettering |
| 101- | Customized Lettering |

Lettering - Aluminium / Plastic Material



Lettering - Stainless Steel



Lettering Colour of Laser Lettering

| Material | Lettering Colour | | |
|----------------------------|------------------|----------------|--------------------------------|
| Stainless Steel | black | Filled letters | |
| Aluminum natural anodized | light grey | Filled letters | (only after customer approval) |
| Aluminum coloured anodized | light grey | Filled letters | |

Order Index Lettering

| Laser Marking | | | |
|----------------|----------------|---------------------|---------------------|
| 001 = A | 021 = U | 041 = ÷ | 061 = EIN |
| 002 = B | 022 = V | 042 = * | 062 = AUS |
| 003 = C | 023 = W | 043 = = | 063 = AUF |
| 004 = D | 024 = X | 044 = # | 064 = AB |
| 005 = E | 025 = Y | 045 = ↔ | 065 = ON |
| 006 = F | 026 = Z | 046 = † | 066 = OFF |
| 007 = G | 027 = 0 | 047 = → | 067 = UP |
| 008 = H | 028 = 1 | 048 = ← | 068 = DOWN |
| 009 = I | 029 = 2 | 049 = ↓ | 069 = HIGH |
| 010 = J | 030 = 3 | 050 = ↑ | 070 = LOW |
| 011 = K | 031 = 4 | 051 = % | 071 = ON/OFF |
| 012 = L | 032 = 5 | 052 = √ | 072 = START |
| 013 = M | 033 = 6 | 053 = CTRL | 073 = RESET |
| 014 = N | 034 = 7 | 054 = RETURN | 074 = |
| 015 = O | 035 = 8 | 055 = SHIFT | 075 = |
| 016 = P | 036 = 9 | 056 = LOCK | 076 = |
| 017 = Q | 037 = + | 057 = STOP | 077 = |
| 018 = R | 038 = - | 058 = ENTER | |
| 019 = S | 039 = . | 059 = BACK | |
| 020 = T | 040 = x | 060 = LINE | |

All Variants

| Mounting Diameter | Terminal | Housing Material, Torsion Protection | Colour of Housing | Actuator area | Illumination, LED | Config. Code | Order Number |
|-------------------|---------------|--------------------------------------|-------------------|---------------|---|----------------|--------------|
| 24 | Flexible wire | Aluminum ,no | Alu natural | F | Ring Illumination, red / green, 12 VDC | PSE M 24 NO RI | 1241.3134 |
| 24 | Flexible wire | Aluminum ,no | Alu natural | F | Ring Illumination, red / green, 24 VDC | PSE M 24 NO RI | 1241.3010 |
| 24 | Flexible wire | Aluminum ,no | Alu natural | F | Ring Illumination, multicolor, 5 - 28 VDC | PSE M 24 NO RI | 1241.3665 |

Nut with gasket are enclosed in the box.

| Mounting Diameter | Terminal | Housing Material, Torsion Protection | Colour of Housing | Actuator area | Illumination, LED | Config. Code | Order Number |
|-------------------|----------|--------------------------------------|-------------------|---------------|-------------------|--------------|--------------|
|-------------------|----------|--------------------------------------|-------------------|---------------|-------------------|--------------|--------------|

Other mounting diameters, materials, colors, connections, supply voltages possible available on request.
Special materials e.g. Marine grade stainless steel for use in salt and chlorinated environment on request.

The MOQ for standard laser lettering on standard variants is 10 pieces.

■ Most Popular.

Availability for all products can be searched real-time: <https://www.schurter.com/en/Stock-Check/Stock-Check-SCHURTER>

Legend:

Type: PSE

NO = normaly open

IV = prolonged signal

RU = Pl = Point Illumination

RI = Ring Illumination

LE = Lettered

K = Plastics

Alu = Aluminium

ES = Stainless steel

F = Finger guidance

E = without finger guidance

Packaging unit 10 in box with insert or packed in air cushion bags



- Actuating elements in ESD safe packaging
- Screw nuts and sealing rings in a bag (enclosed in the box)

Accessories

Description



Connecting Terminal PSE
Connecting Terminal



Power Supply
Power Supply IP42 for LED- and Illumination applications indoor 90~264 VAC => 24 VDC 0.34 A 8 W