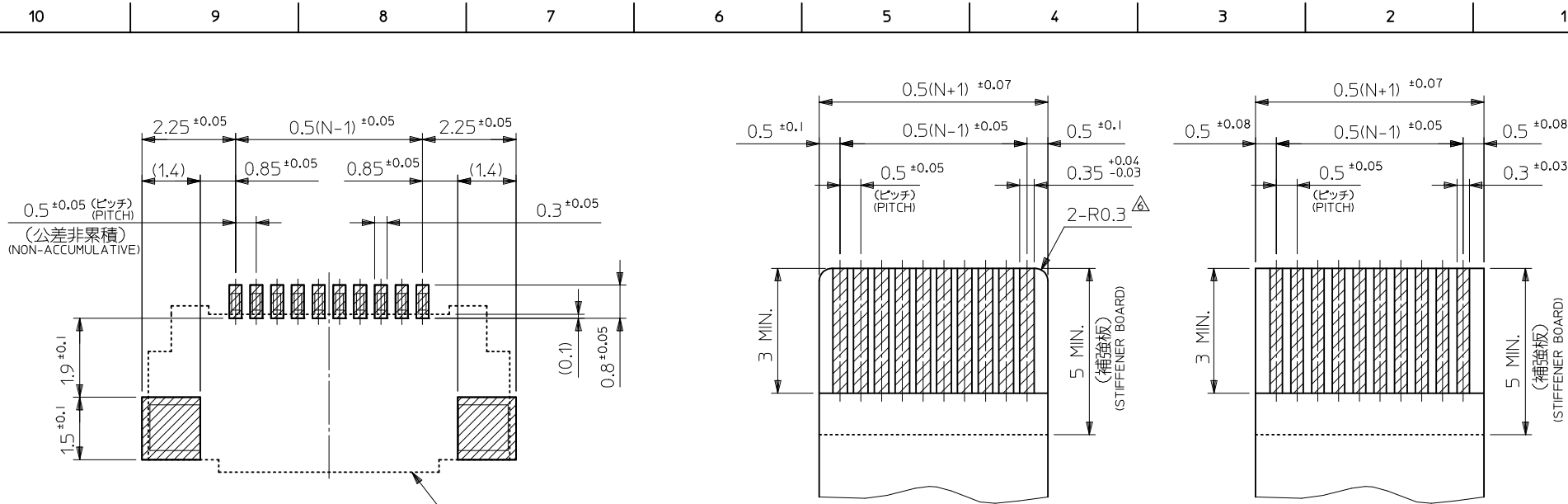


22.8	23.0	25.1	22.0	26.2	51296-4531	45
20.3	20.5	22.6	19.5	23.7	51296-4031	40
9.3	9.5	11.6	8.5	12.7	51296-1831	18
7.3	7.5	9.6	6.5	10.7	51296-1431	14
6.3	6.5	8.6	5.5	9.7	51296-1231	12
E	D	C	B	A	製品番号 MATERIAL No. MODEL No. 51296-***31	極数 Ckt

REVISED EC NO: J2014-1468 DRWN: AYOSHI I 01 2014/03/29 CHKD: YKOBAYASHI 02 2014/03/29 APPR: YNOGAWA 2014/04/17	GENERAL TOLERANCES (UNLESS SPECIFIED)		DIMENSION STYLE MM ONLY		SCALE -	DESIGN UNITS METRIC	0.5 FPC CONN ZIF E/O HSG ASSY (HGT=1.3) BTM CONT molex SD-51296-009	THIRD ANGLE PROJECTION		
	10 UNDER ± ---	10 OVER 30 UNDER ± ---	DRAWN BY M.UMEDA	DATE 2004/11/24	TITLE					
	30 OVER ± ---	ANGULAR ± --- °	CHECKED BY K.TOYODA	DATE 2004/11/24	APPROVED BY N.UKITA				DOCUMENT NO. SD-51296-009	SHEET NO. 1 OF 2
	DRAFT WHERE APPLICABLE MUST REMAIN WITHIN DIMENSIONS		MATERIAL NO. SEE CHART		THIS DRAWING CONTAINS INFORMATION THAT IS PROPRIETARY TO MOLEX INCORPORATED AND SHOULD NOT BE USED WITHOUT WRITTEN PERMISSION					



参考基板レイアウト
P.C. BOARD PATTERN
DIMENSION (REF.)
(マウント面)
(MOUNTING SIDE)

コネクタ位置
CONNECTOR POSITION

適合FPC推奨寸法
APPLICABLE FPC
RECOMMENDED DIMENSION
(仕上がり厚さ: 0.3 ±0.05)
(THICKNESS: 0.3 ±0.05)

適合FFC推奨寸法
APPLICABLE FFC
RECOMMENDED DIMENSION
(仕上がり厚さ: 0.3 ±0.05)
(THICKNESS: 0.3 ±0.05)

注記 NOTES

1. 使用材料 MATERIAL

ハウジング : 液晶ポリマー ガラス充填, UL94V-0 (ベージュ)
HOUSING : LIQUID CRYSTAL POLYMER GLASS FILLED, UL94V-0 (BEIGE)
アクチュエータ : ポリアミド 9T ガラス充填, UL94V-0 (黒)
ACTUATOR : POLYAMIDE 9T GLASS FILLED, UL94V-0 (BLACK)
ターミナル : リン青銅 (t=0.18)
TERMINAL : PHOSPOR BRONZE
金具 : リン青銅 (t=0.15)
FITTING NAIL : PHOSPOR BRONZE

3. エンボステープ梱包時は、アクチュエータが閉じた状態とする。
IN THE PACKAGE, ACTUATOR OF PART NO.51296-**31 SHOULD BE CLOSED.

- △ 偶数極に適用。
APPLY FOR EVEN CIRCUIT.
- △ /パターンはくり止め用金具
FITTING NAIL FOR PREVENTION OF PEELING OF PCB PATTERN.
- △ R0.3は、FPC 導体部にかからないこと。
R0.3 MUST NOT BE OVERLAPPED TO PATTERN OF FPC.
- △ 極数によりハウジング形状が異なるので注意のこと。
THE HOUSING SHAPE IS DIFFERENT ACCORDING TO THE CIRCUIT.

2. メッキ仕様 PLATING

ターミナル TERMINAL
銅下地半田メッキ
TIN-LEAD (Sn-Pb) OVER COPPER (Cu) PLATING
金具 FITTING NAIL
銅下地半田メッキ
TIN-LEAD (Sn-Pb) OVER COPPER (Cu) PLATING

FPC/FFCについて:

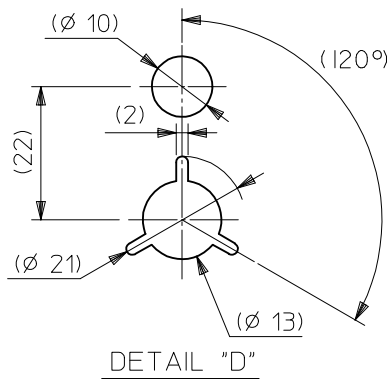
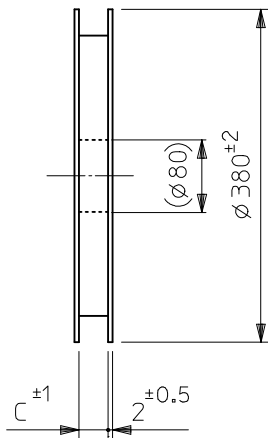
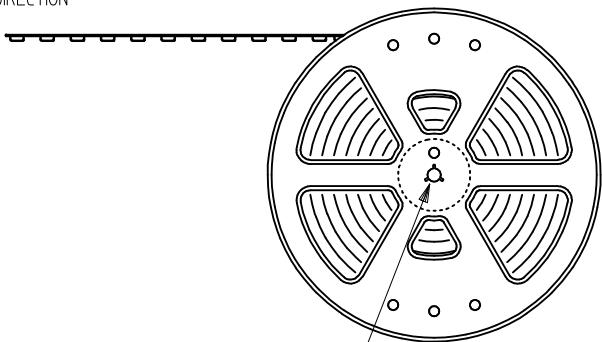
打抜き方向は導体側から補強板側を推奨いたします。
導体部については軟銅箔35マイクロメートルまたは50マイクロメートルを推奨致します。
ABOUT FPC/FFC
RECOMMENDED PUNCHER DIRECTION : FROM CONDUCTOR SIDE TO STIFFENER FILM SIDE.
RECOMMENDED CONDUCTOR SPEC :
THICKNESS OF SOFT COPPER FOIL : 35 MICROMETER OR 50 MICROMETER

FPCについて:

補強フィルム材質はポリイミドを推奨します。
接着剤は熱硬化接着剤を推奨します。
ABOUT FPC
RECOMMENDED MATERIAL :
STIFFENER FILM : POLYIMIDE
BONDING AGENT : THERMOSETTING BONDING AGENT

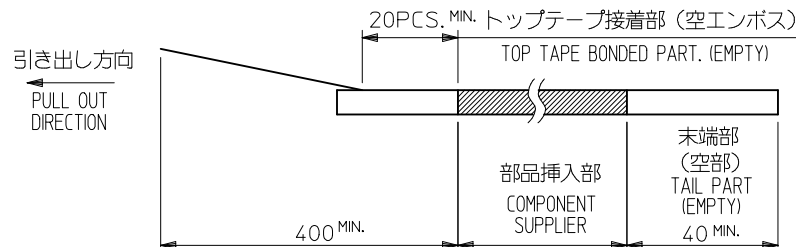
REVISED EC NO: J2014-1468 DRWN: YOSHII 2014/03/29 CHKD: YKOBAYASHI 2014/03/29 APPR: YNOGAWA 2014/04/17	GENERAL TOLERANCES (UNLESS SPECIFIED)		DIMENSION STYLE MM ONLY	SCALE -	51296-**31 DESIGN UNITS METRIC	MODEL No. THIRD ANGLE PROJECTION
	10 UNDER	± ---	DRAWN BY M.UMEDA	DATE 2004/11/24	TITLE 0.5 FPC CONN ZIF E/O HSG ASSY (HGT=1.3) BTM CONT	
	10 OVER 30 UNDER	± ---	CHECKED BY K. TOYODA	DATE 2004/11/24		
	30 OVER	± ---	APPROVED BY N. UKITA	DATE 2004/11/24		
ANGULAR	± --- °	MATERIAL NO.	DOCUMENT NO.	SEE CHART SD-51296-009		
DRAFT WHERE APPLICABLE MUST REMAIN WITHIN DIMENSIONS		SIZE A3	THIS DRAWING CONTAINS INFORMATION THAT IS PROPRIETARY TO MOLEX INCORPORATED AND SHOULD NOT BE USED WITHOUT WRITTEN PERMISSION			

引き出し方向
PULL OUT DIRECTION

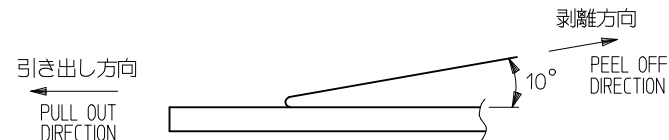


NOTES

- 製品詳細寸法については図面 SD-51296-009 を参照下さい。
RE DETAILED DIMENSION, SEE SD-51296-009
- 梱包数量：3000個/リール
NUMBER OF CONNECTORS：3000PCS/REEL
- リードテープ長さ LEAD TAPE LENGTH



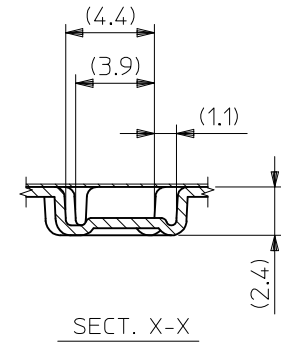
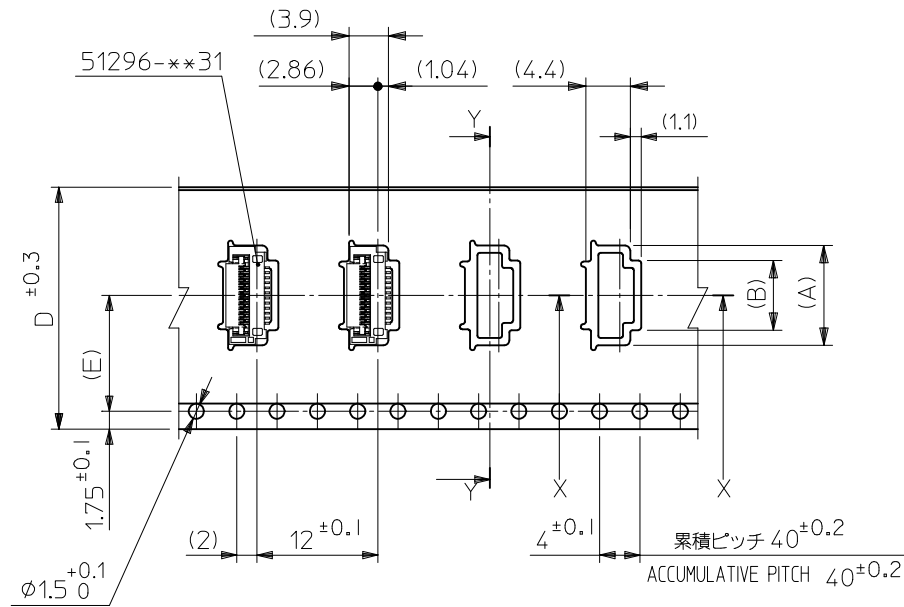
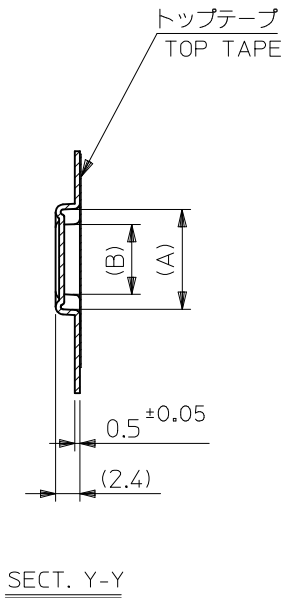
- トップテープの剥離強度：0.1N～1.3N(10gf～130gf)
(剥離方向は下図参照)
尚、本規格値は出荷時に適用。(但し、輸送時に剥離が発生しないこと。)
PEELING OFF FORCE OF TOP TAPE：0.1N～1.3N(10gf～130gf)
(PEELING DIRECTION AS SHOWN IN FOLLOWING FIG.)
THIS REQUIREMENT SHOULD BE APPLIED AT SHIPMENT.
PEEL OFF SHOULD NOT BE ALLOWED, DURING TRANSPORTATION.



- 材料(MATERIAL)
キャリアテープ (CARRIER TAPE) :ポリプロピレン (POLYPROPYLENE)
トップテープ (TOPTAPE) : PET, PE, PEF
リール (REEL): ポリスチレン (PS) <リサイクル材を含む>
POLYSTYRENE (PS) <RECYCLE MATERIAL CONTAINED>

REVISED EC NO: J2014-1468 DRWN:AYOSHI I 01 2014/03/29 CHKD:YKOBAYASHI 02 2014/03/29 APPR:YNOGAWA 2014/04/17	GENERAL TOLERANCES (UNLESS SPECIFIED)		DIMENSION STYLE MM ONLY		SCALE ---	51296-**92	MODEL NO.
	10 UNDER	±---	DRAWN BY K. TOYODA	DATE 2004/11/24	TITLE	0.5 FPC CONN EASY ON HGT=1.3MM EMBSTP PKG	
	10 OVER 30 UNDER	±---	CHECKED BY N. UKITA	DATE 2004/11/24		THIRD ANGLE PROJECTION	
	30 OVER	±---	APPROVED BY N. UKITA	DATE 2004/11/24		molex	
DESCRIPTION	ANGULAR ±---°	MATERIAL NO. SEE CHART		DOCUMENT NO. SD-51296-010		SHEET NO. 1 OF 3	
REV	DRAFT WHERE APPLICABLE MUST REMAIN WITHIN DIMENSIONS		THIS DRAWING CONTAINS INFORMATION THAT IS PROPRIETARY TO MOLEX INCORPORATED AND SHOULD NOT BE USED WITHOUT WRITTEN PERMISSION				

引き出し方向
PULL OUT DIRECTION



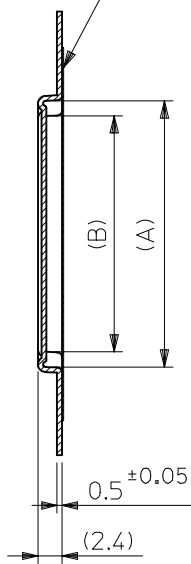
11.5	24	25.4	9.89	12.9	51296-1892	18
			7.89	10.9	51296-1492	14
			6.89	9.9	51296-1292	12
(E)	D	C	(B)	(A)	製品番号 MATERIAL No	極数 Ckt

REVISED EC NO: J2014-1468 DRWN: AYOSHI I 01 2014/03/29 CHKD: YKOBAYASHI 02 2014/03/29 APPR: YNOGAWA 2014/04/17	GENERAL TOLERANCES (UNLESS SPECIFIED)		DIMENSION STYLE MM ONLY		SCALE ---	DESIGN UNITS METRIC	MODEL NO. 51296-**-92
	10 UNDER	± ---	DRAWN BY K. TOYODA	DATE 2004/11/24	TITLE 0.5 FPC CONN EASY ON HGT=1.3MM EMBSTP PKG		
	10 OVER 30 UNDER	± ---	CHECKED BY N. UKITA	DATE 2004/11/24			
	30 OVER	± ---	APPROVED BY N. UKITA	DATE 2004/11/24			
ANGULAR ± --- °		MATERIAL NO.	DOCUMENT NO.	SHEET NO. 2 OF 3			
DRAFT WHERE APPLICABLE MUST REMAIN WITHIN DIMENSIONS		SEE CHART		SD-51296-010			
THIS DRAWING CONTAINS INFORMATION THAT IS PROPRIETARY TO MOLEX INCORPORATED AND SHOULD NOT BE USED WITHOUT WRITTEN PERMISSION							

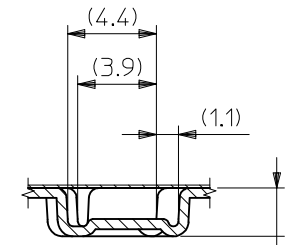
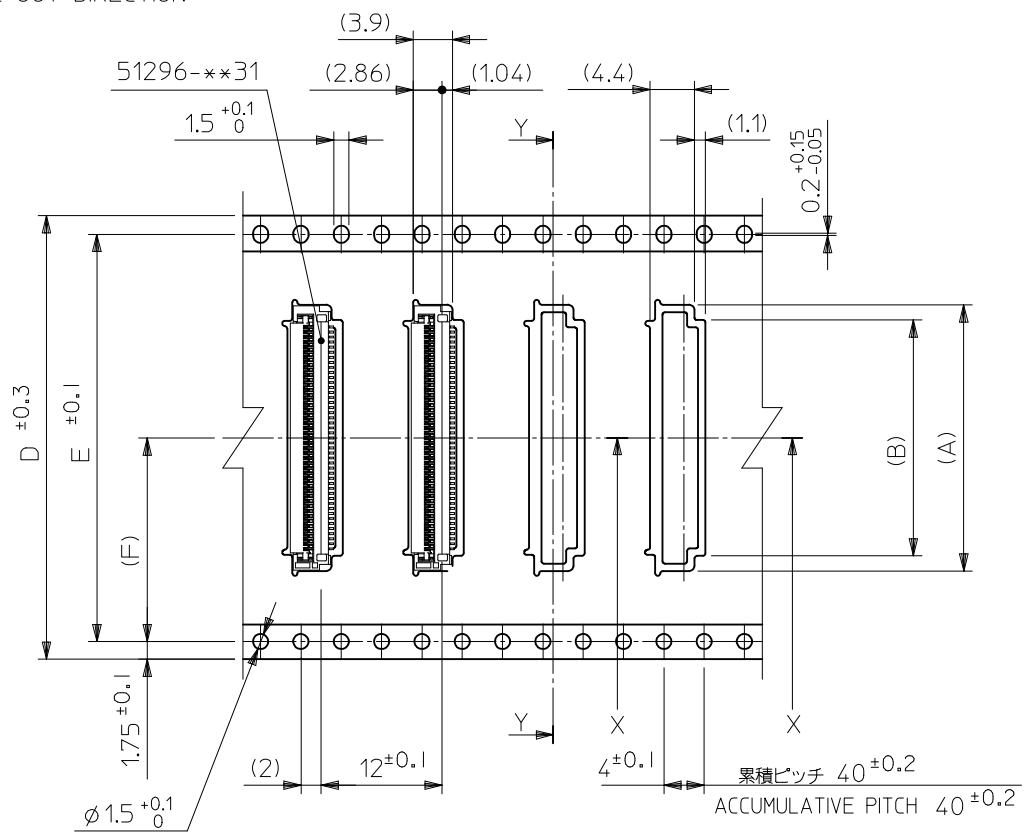
10 9 8 7 6 5 4 3 2 1

引き出し方向
PULL OUT DIRECTION

トップテープ
TOP TAPE



SECT. Y-Y



SECT. X-X

20.2	40.4	44	45.4	23.39	26.4	51296-4592	45
				20.89	23.9	51296-4092	40
14.2	28.4	32	33.4	17.89	20.9	51296-3492	34
(F)	E	D	C	(B)	(A)	製品番号 MATERIAL No	極数 Ckt

REVISED EC NO: J2014-1468 DRWN: AYOSHI I 01 2014/03/29 CHKD: YKOBAYASHI 02 2014/03/29 APPR: YNOGAWA 2014/04/17	GENERAL TOLERANCES (UNLESS SPECIFIED)		DIMENSION STYLE MM ONLY		SCALE ---		DESIGN UNITS METRIC		MODEL NO. 51296-**-92		
	10 UNDER ± ---		DRAWN BY K. TOYODA		DATE 2004/11/24		TITLE 0.5 FPC CONN EASY ON HGT=1.3MM EMBSTP PKG				
	10 OVER 30 UNDER ± ---		CHECKED BY N. UKITA		DATE 2004/11/24		THIRD ANGLE PROJECTION				
	30 OVER ± ---		APPROVED BY N. UKITA		DATE 2004/11/24						
ANGULAR ± --- °		DRAFT WHERE APPLICABLE MUST REMAIN WITHIN DIMENSIONS		MATERIAL NO. SEE CHART		DOCUMENT NO. SD-51296-010		SHEET NO. 3 OF 3			
SIZE A3		THIS DRAWING CONTAINS INFORMATION THAT IS PROPRIETARY TO MOLEX INCORPORATED AND SHOULD NOT BE USED WITHOUT WRITTEN PERMISSION									

9 8 7 6 5 4 3 2