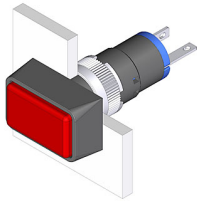


# EAO – Your Expert Partner for Human Machine Interfaces

18-041.0055L - Indicator actuator

## 18-041.0055L - Indicator actuator



*Attention: The preview is based on a sample product. This can differ from your current configuration.*

### Mounting

Mounting cut-out                    Ø 8 mm  
Design                                    raised

### Front

Front dimension                    9 x 14 mm  
Front shape                            rectangular

### Other Attributes

Weight                                    0.002 kg  
Operation current                    2 mA  
Operating voltage                    12 V DC ±10 %

### Operating-/Indication part

Lens material                            Plastic  
Lens colour                              green  
Lens profile                              flat  
Lens optics                                translucent  
Lens illumination                      illuminative

### IP-Rating

Front protection                      IP40

### Connection Method

Terminal                                 Solder

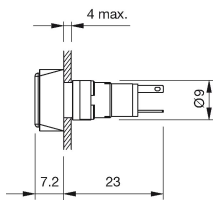
### Function

Indicator

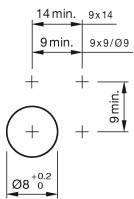
# EAO – Your Expert Partner for Human Machine Interfaces

18-041.0055L - Indicator actuator

## Dimensions



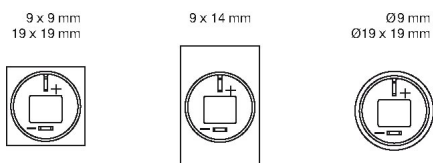
## Mounting cut-outs



## Wiring diagram



## Component layout



## Additional information

Luminosity and wave length variations caused by LED manufacturing processes may cause slight differences regarding the illumination