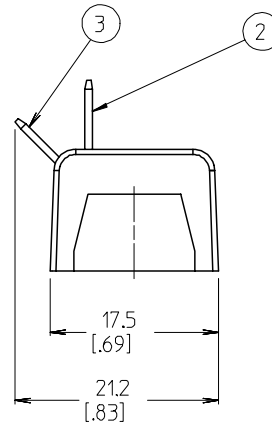


AUXILIARY VIEW
SCALE 1:1



NOTES:

- 1. MATERIAL: SEE TABLE
- 2. FINISHES: SEE TABLE
- 3. INCH DIMENSIONS ARE SHOWN IN BRACKETS [XXX].
- 4. ALL COMPONENTS ARE ROHS COMPLIANT.
- 5. RECOMMENDED TIGHTENING TORQUE FOR MOUNTING SCREWS IS 12 IN-LB, 15 IN-LB MAX.

ITEM	QTY	DESCRIPTION	MATERIAL	FINISH
4	2	RIVET	BRASS	TN
3	2	TERMINAL, FAST TAB, .250 X .032, VSL	BRASS	TN
2	2	TERMINAL, FAST TAB, .250 X .032, VVR	BRASS	TN
1	1	BARRIER TERMINAL STRIP	PHENOLIC	BLACK

ADD MTG TORQUE
EC NO: ETC2007-0374
DRAWN: CLYORK 2007/04/13
CHKD: JMACNEIL 2007/04/27
APPR: JMACNEIL 2007/04/30

QUALITY SYMBOLS
 =0
 =0

GENERAL TOLERANCES (UNLESS SPECIFIED)

	mm	INCH
4 PLACES	± .005	± .0005
3 PLACES	± .013	± .001
2 PLACES	± 0.3	± .012
1 PLACE	± 0.3	± .012

ANGULAR ± 2 °

DRAFT WHERE APPLICABLE
MUST REMAIN WITHIN DIMENSIONS

DIMENSION STYLE
MM/IN

DRAWN BY: EHILE DATE: 2006/07/07
 CHECKED BY: JMACNEIL DATE: 2006/07/07
 APPROVED BY: RDEROSS DATE: 2006/07/07

SCALE 2:1 DESIGN UNITS INCH

THIRD ANGLE PROJECTION

TITLE: 11.11MM [.438] SR BTS FAST TAB ASSY, -R

MATERIAL NO. 382590001 DOCUMENT NO. SD-38259-003 SHEET NO. 1 OF 1

MOLEX INCORPORATED

THIS DRAWING CONTAINS INFORMATION THAT IS PROPRIETARY TO MOLEX INCORPORATED AND SHOULD NOT BE USED WITHOUT WRITTEN PERMISSION