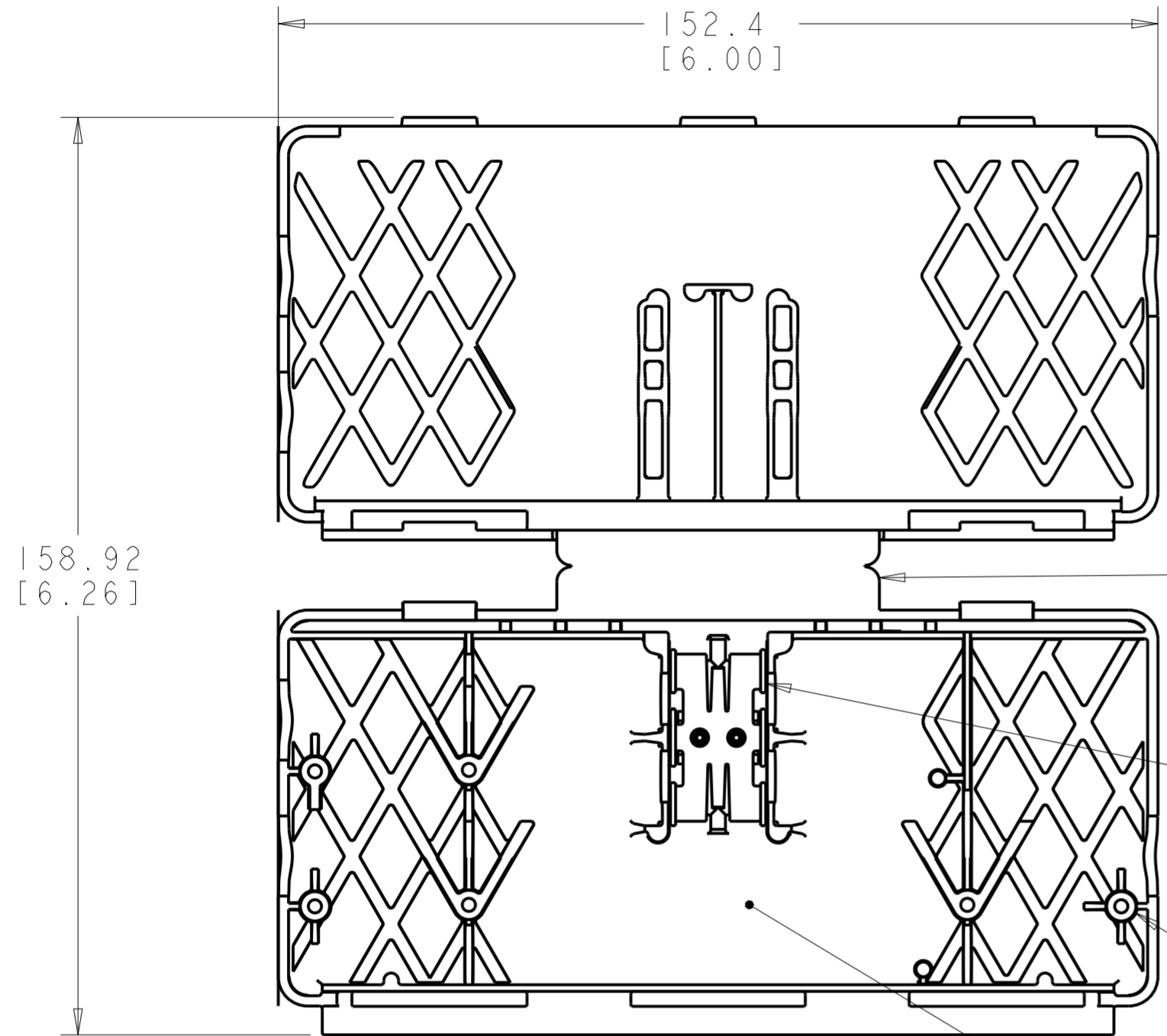


THIS DRAWING IS UNPUBLISHED. RELEASED FOR PUBLICATION  
 © 2016 COMMSCOPE, INC. CONFIDENTIAL NOTICE: THESE DRAWINGS AND SPECIFICATIONS ARE THE PROPRIETARY PROPERTY OF COMMSCOPE, INC. AND MAY BE USED ONLY FOR THE SPECIFIC PURPOSE AUTHORIZED IN WRITING BY COMMSCOPE, INC.

LOC	DIST	REVISIONS					
HM	00	P	LTR	DESCRIPTION	DATE	DWN	APVD
		C		REV; ECO-09-006580	30MAR2009	GG	NJ
		D		ECN 8000019699 REBRANDING	2FEB2017	JUM	ARL



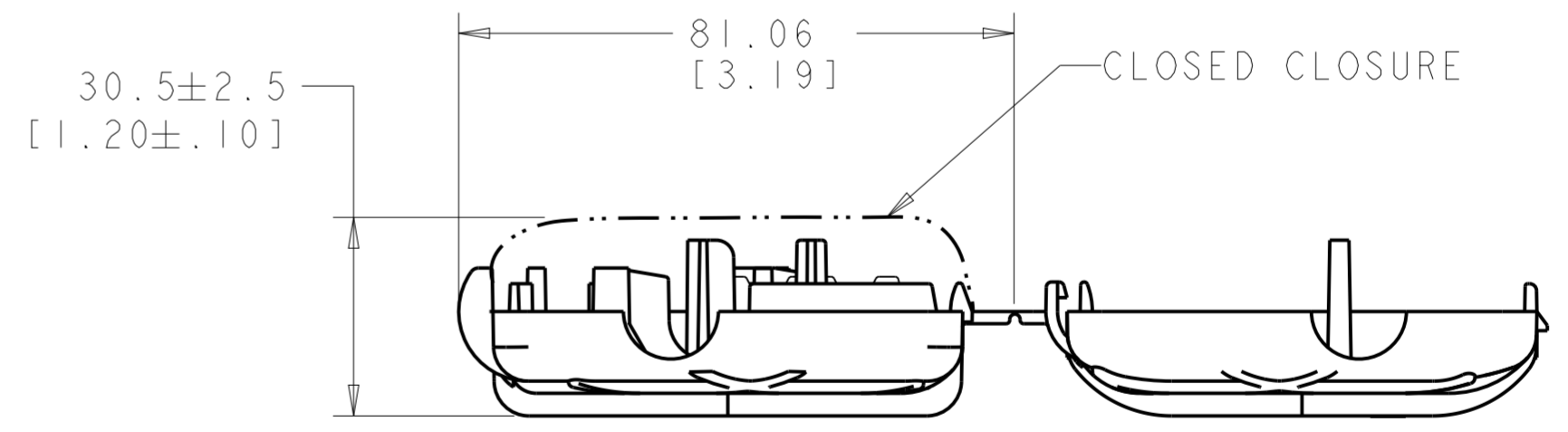
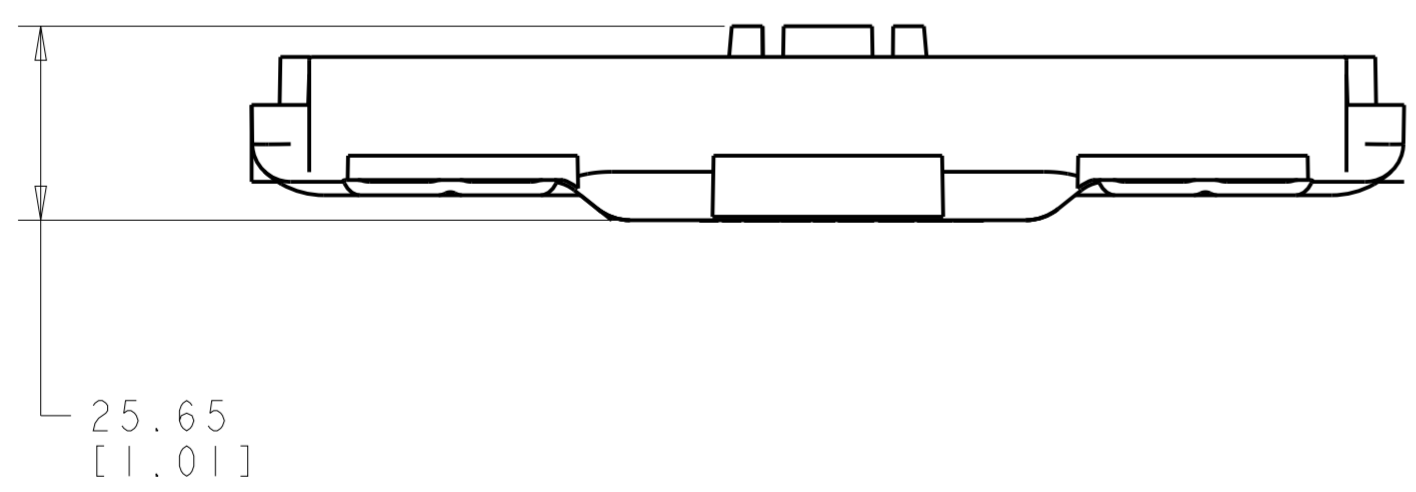
HINGED, ONE PIECE CLOSURE

SHIELD DISTORTION TERMINAL

CABLE STRAIN RELIEF

ENCAPSULATING SEALANT

- 1. MATERIAL: CLOSURE: POLYPROPYLENE MOLDING COMPOUND, BLACK.  
TERMINAL - BRASS.  
GEL - CS SEALANT #20.
- 2. UNIT WILL ACCEPT 2 THROUGH 6 PAIR BURIED SERVICE WIRE.
- 3. GROUNDING SHIELDS WILL BE CONNECTED BY INTEGRATED SHIELD DISTORTION CONNECTOR.
- 4. TWISTED PAIRS SHALL BE TERMINATED USING INDUSTRY STANDARD WIRE SPLICES.
- 5. APPLICATION IS ACCOMPLISHED BY PRESSING PREPARED CABLE ENDS INTO THE SHIELD DISTORTION CONNECTOR, ALIGNING THE CABLES IN THE STRAIN RELIEFS PROVIDED, ARRANGING THE SPLICES IN THE ADJACENT GEL CONTAINMENT AREA, AND ENGAGING THE LATCHES BY FOLDING THE UNIT CLOSED AROUND THE SPLICE.



569579-1  
PART NUMBER

THIS DRAWING IS A CONTROLLED DOCUMENT.		DWN B. SIMPSON 16OCT96	<b>COMMSCOPE, INC.</b>	
DIMENSIONS: MM [INCHES]		CHK BHS 20JAN97		
TOLERANCES UNLESS OTHERWISE SPECIFIED:		APVD G. THRUSH 22JAN97	NAME CLOSURE ASSEMBLY, SERVICE WIRE SPLICE	
0 PLC ±	1 PLC ±	PRODUCT SPEC 108-1673	SIZE A2	CAGE CODE -
2 PLC ±0.51 [0.02]	3 PLC ±	APPLICATION SPEC 408-3371	DRAWING NO G-569579	RESTRICTED TO -
4 PLC ±	ANGLES ±	WEIGHT -	SCALE 1:1	SHEET OF 1
MATERIAL -	FINISH -	CUSTOMER DRAWING	REV D	