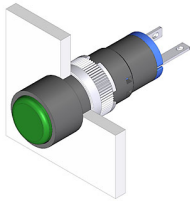


# EAO – Your Expert Partner for Human Machine Interfaces

18-030.0055L - Indicator actuator

## 18-030.0055L - Indicator actuator



*Attention: The preview is based on a sample product. This can differ from your current configuration.*

### Mounting

Mounting cut-out Ø 8 mm  
Design raised

### Front

Front dimension Ø 9 mm  
Front shape round

### Other Attributes

Weight 0.002 kg  
Operation current 2 mA  
Operating voltage kundenspezifisch V

### Operating-/Indication part

Lens material Plastic  
Lens colour green  
Lens profile flat  
Lens optics translucent  
Lens illumination illuminative

### IP-Rating

Front protection IP40

### Connection Method

Terminal Solder

### Illumination

Forward voltage typ. 3.2 V DC @ 20 mA  
LED colour green

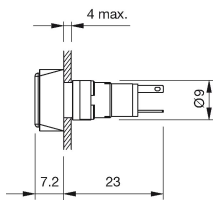
### Function

Indicator

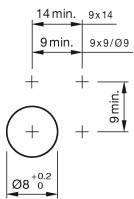
# EAO – Your Expert Partner for Human Machine Interfaces

18-030.0055L - Indicator actuator

## Dimensions



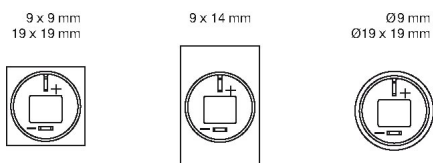
## Mounting cut-outs



## Wiring diagram



## Component layout



## Additional information

Luminosity and wave length variations caused by LED manufacturing processes may cause slight differences regarding the illumination

The series resistance for LEDs need to be determined and integrated by customers.