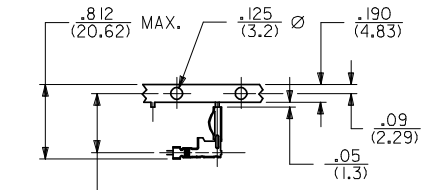
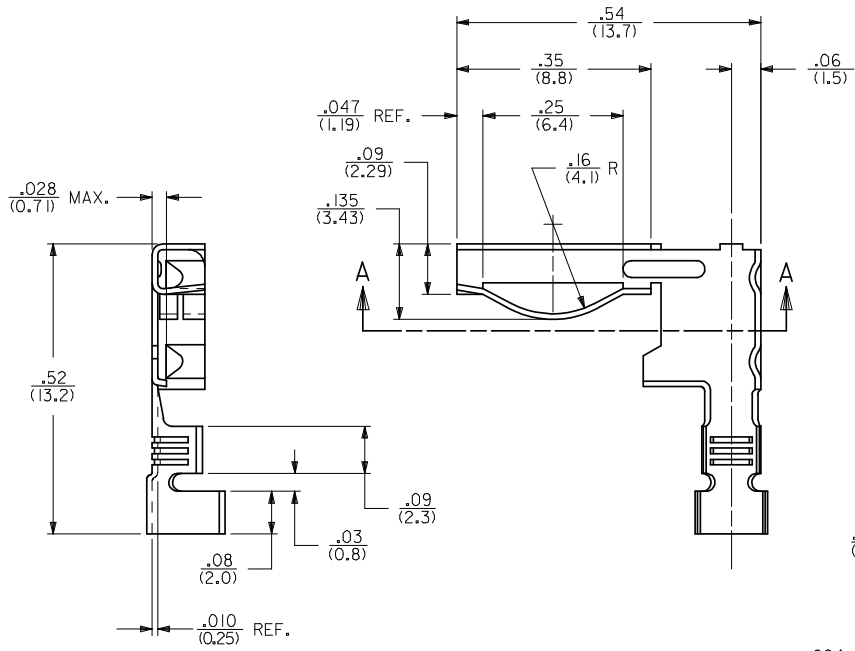


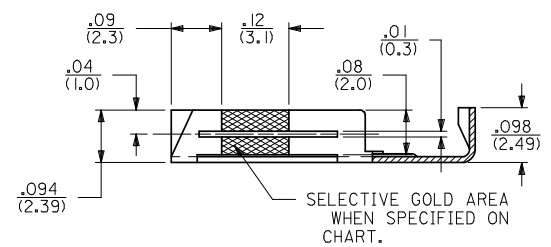
13	12	11	10	9	8	7	6	5	4	3	2	1
PART NO.	PACKED	MATERIAL	FINISH	WIRE RANGE AWG.	INS. DIA. RANGE	C	D	E	F	ENG. NO.	REMARKS	
08-35-0105	CHAIN	70/30 BRASS .010/(0.25) THICK	.00002/(0.0005) MIN. GOLD PLATE OVER .00003/(0.0008) MIN. NICKEL PLATE	#18-#24 CU. STR.	0.060/0.120 (1.52/3.05)	0.130±.030 (3.30±0.76)	0.140±.015 (3.56±0.38)	0.105±.020 (2.67±0.51)	0.088±.015 (2.24±0.38)	1799-MAG	GOLD OVERALL	
08-34-0105	CHAIN	70/30 BRASS .010/(0.25) THICK	.00002/(0.0005) MIN. GOLD PLATE OVER .00003/(0.0008) MIN. NICKEL PLATE PER ENG. STD. NO. 41.							1799-MAG I	SELECTIVE GOLD	
08-30-0109	CHAIN	70/30 BRASS .010/(0.25) THICK	TIN PLATED							1799-MAT		



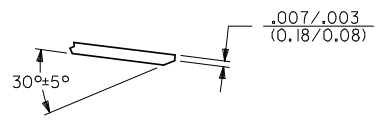
CARRIER STRIP DETAIL
ACTUAL SIZE

NOTES:

1. MATERIAL: SEE CHART
2. FINISH: SEE CHART
3. PRODUCT SPECIFICATION: NONE
4. REEL WINDING PER ES-339 "A" WINDING.
5. WIRE STRIP LENGTH TO BE .140(3.56)
6. MAXIMUM VOLTAGE: 250 VAC (NOT CONSIDERING PCB).
CURRENT RATING DEPENDS ON MATING PCB.
UP TO 7.0 AMPS MAXIMUM PER CIRCUIT IS POSSIBLE
UNDER IDEAL CONDITIONS.
7. PARTS CONFORM TO CLASS B REQUIREMENTS OF
COSMETIC SPECIFICATION PS-45499-002.

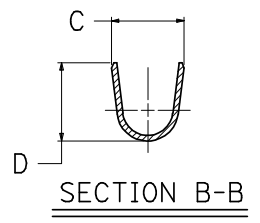


SECTION A-A

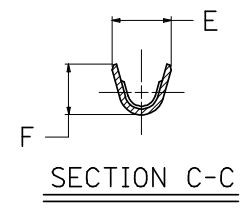


COIN DETAIL

SCALE 12:1
TYP. FOR BOTH CONDUCTOR
AND INSULATOR CRIMPS
1799-M SERIES ONLY



SECTION B-B



SECTION C-C

OBSOLETE PARTS EC NO: UCP2008-0368 DRAWN: ADERR 2007/12/11 CHKD: LSCHMIDT 2007/12/12 APPR: FSM/TH 2007/12/13	QUALITY SYMBOLS	GENERAL TOLERANCES (UNLESS SPECIFIED)	DIMENSION STYLE	SCALE	DESIGN UNITS	THIRD ANGLE PROJECTION	
	▽=0 ▽=0	mm INCH	IN/MM	6:1	INCH		
		4 PLACES ± --- ± --- 3 PLACES ± --- ± .010 2 PLACES ± 0.25 ± .015 1 PLACE ± 0.38 ± --- ANGULAR ± 1/2°	DRAWN BY DATE MAB 1992/06/05 CHECKED BY DATE ESS 1992/06/05 APPROVED BY DATE RAS 1992/06/05	TITLE	TERMINAL - RIGHT ANGLE MODIFIED FOR EDGE CONNECTORS		
		DRAFT WHERE APPLICABLE MUST REMAIN WITHIN DIMENSIONS	MATERIAL NO. SEE CHART	DOCUMENT NO.	MOLEX INCORPORATED SD-1799-MA		
M1	REV		SIZE	THIS DRAWING CONTAINS INFORMATION THAT IS PROPRIETARY TO MOLEX INCORPORATED AND SHOULD NOT BE USED WITHOUT WRITTEN PERMISSION			
						SHEET NO. 1 OF 1	