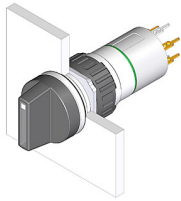


# EAO – Your Expert Partner for Human Machine Interfaces

## 52-473.036 - Selector switch 2 positions

### 52-473.036 - Selector switch 2 positions



*Attention: The preview is based on a sample product. This can differ from your current configuration.*

#### Mounting

Mounting cut-out Ø 16 mm  
Design raised

#### Front

Front dimension Ø 18 mm  
Front shape round

#### Other Attributes

Weight 0,007 kg

#### Operating-/Indication part

Switching angle 90° right  
Lever illumination  
Lever shape short  
Lever material Plastic

#### IP-Rating

Front protection IP65

#### Connection Method

Terminal Universal 2.0 x 0.5 mm

#### Actuator

Switching action Rest - Maintain

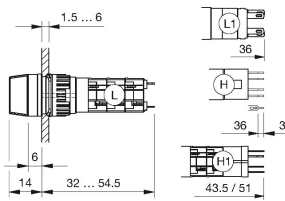
#### Switching element

Rotary positions 2  
Switching system Low-level element  
Contacts 1 NC + 1 NO  
Switching voltage 42 V AC/DC  
Switching current 0.1 A  
Contact material gold-plated silver

# EAO – Your Expert Partner for Human Machine Interfaces

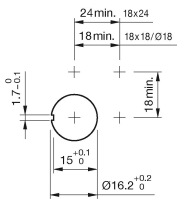
52-473.036 - Selector switch 2 positions

## Dimensions

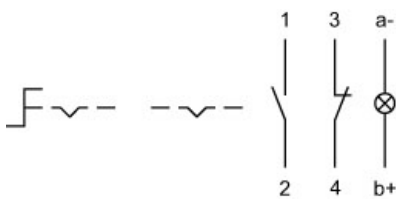


H = Universal terminal 2.0 x 0.5 mm

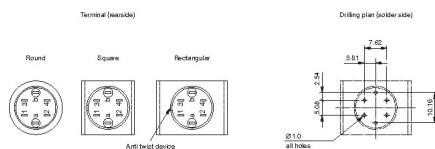
## Mounting cut-outs



## Wiring diagram



## Component layout



## Additional information

illuminative

## Legend

Contacts: NC = Normally closed, NO = Normally open  
Switching action: A = Rest, C = Maintained

# EAO – Your Expert Partner for Human Machine Interfaces

52-473.036 - Selector switch 2 positions

## Switching positions

