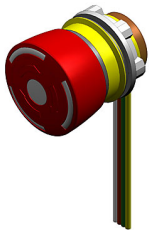


# EAO – Your Expert Partner for Human Machine Interfaces

84-5040.0040 - Emergency-stop switch complete, foolproof EN IEC 60947-5-5

## 84-5040.0040 - Emergency-stop switch complete, foolproof EN IEC 60947-5-5



Attention: The preview is based on a sample product. This can differ from your current configuration.

### Mounting

|                    |           |
|--------------------|-----------|
| Mounting cut-out   | Ø 22,3 mm |
| Design             | raised    |
| Behind panel depth | 13,5 mm   |

### Front

|                 |         |
|-----------------|---------|
| Front dimension | Ø 32 mm |
| Front shape     | round   |

### Other Attributes

|        |          |
|--------|----------|
| Weight | 0,036 kg |
|--------|----------|

### Operating-/Indication part

|                   |                  |
|-------------------|------------------|
| Lens material     | Plastic          |
| Lens colour       | red              |
| Lens profile      | Mushroom         |
| Lens optics       | opaque           |
| Lens illumination | non-illuminative |

### IP-Rating

|                  |      |
|------------------|------|
| Front protection | IP65 |
|------------------|------|

### Connection Method

|          |                   |
|----------|-------------------|
| Terminal | Flat ribbon cable |
|----------|-------------------|

### Actuator

|                  |            |
|------------------|------------|
| Switching action | Maintained |
| Housing colour   | yellow     |
| Housing material | Plastic    |

### Switching element

|                   |                             |
|-------------------|-----------------------------|
| Switching voltage | 250 V AC/DC                 |
| Switching current | 5 A                         |
| Switching system  | Slow-make switching element |
| Contacts          | 2 NC                        |
| Contact material  | gold-plated silver          |

### Illumination

|            |  |
|------------|--|
| LED colour |  |
|------------|--|

### Cable Version

|            |                   |
|------------|-------------------|
| Cable type | Flat ribbon cable |
|------------|-------------------|

### Function

# EAO – Your Expert Partner for **Human Machine Interfaces**

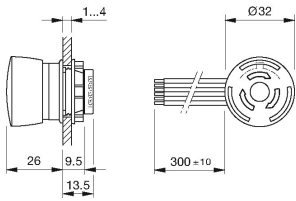
84-5040.0040 - Emergency-stop switch complete, foolproof EN IEC 60947-5-5

Emergency stop switch

# EAO – Your Expert Partner for Human Machine Interfaces

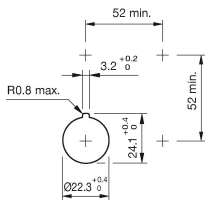
84-5040.0040 - Emergency-stop switch complete, foolproof EN IEC 60947-5-5

## Dimensions

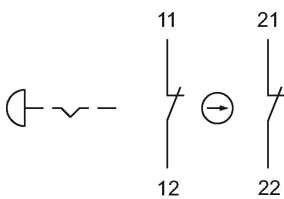


F1 = Flat ribbon cable

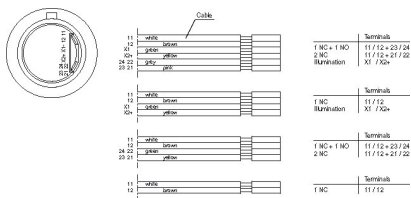
## Mounting cut-outs



## Wiring diagram



## Component layout



## Additional information

Twist to unlock clockwise

Position indication ring black

Application as per DIN EN ISO 13850 and EN 60204-1

Standard version: Flat ribbon-cable length 300 mm or plug-in terminal 2.8 x 0.5 mm

Other options on request: Customisation of flat ribbon-cable and connectors

## Legend

Contacts: NC = Normally closed, NO = Normally open