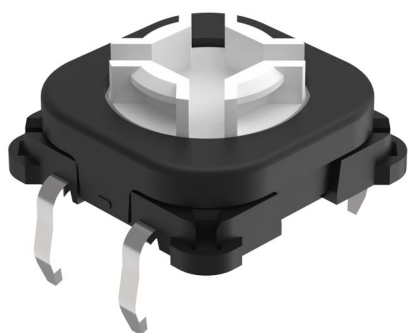


EAO – Your Expert Partner for Human Machine Interfaces

92-851.342 - Switching element PCB mounting illuminative

92-851.342 - Switching element PCB mounting illuminative



Attention: The preview is based on a sample product. This can differ from your current configuration.

Other Attributes

Weight 0,001 kg

Connection Method

Terminal PCB

Actuator

Switching action Momentary

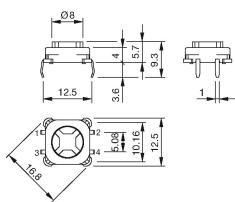
Switching element

Switching system Short-travel element
Contacts 1 NO
Switching current 0.1 A
Contact material
Switching voltage 42 V AC/DC

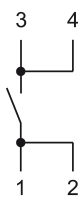
EAO – Your Expert Partner for Human Machine Interfaces

92-851.342 - Switching element PCB mounting illuminative

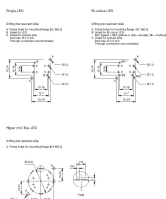
Dimensions



Wiring diagram



Component layout



Additional information

The customer has to decide what series resistor shall be used to the LED
LED and mounting flange to be ordered separately

Legend

Contacts: NO = Normally open
Switching action: B = Momentary