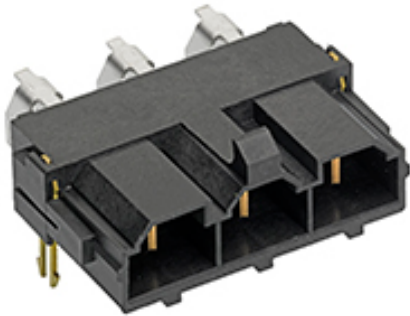


PLEASE CHECK WWW.MOLEX.COM FOR LATEST PART INFORMATION

Part Number: 0428202213
Status: Active
Overview: Mini-Fit Sr. Power Connectors
Description: 10.00mm Pitch Mini-Fit Sr. Header, Single Row, Right Angle, 1.57mm PCB Thickness, 0.76µm Gold (Au) Selective Plating, 2 Circuits

Documents:
[3D Model](#)
[Drawing \(PDF\)](#)
[Product Specification PS-42815-001 \(PDF\)](#)
[Packaging Specification PK-42820-910-001 \(PDF\)](#)
[RoHS Certificate of Compliance \(PDF\)](#)

Agency Certification	
CSA	LR19980
UL	E29179
General	
Product Family	PCB Headers
Series	42820
Application	Power, Wire-to-Board
Overview	Mini-Fit Sr. Power Connectors
Product Name	Mini-Fit Sr.
UPC	800756513836
Physical	
Breakaway	No
Circuits (Loaded)	2
Circuits (maximum)	2
Color - Resin	Black
Durability (mating cycles max)	100
First Mate / Last Break	No
Flammability	94V-0
Glow-Wire Capable	No
Guide to Mating Part	No
Keying to Mating Part	None
Lock to Mating Part	Yes
Material - Metal	Brass
Material - Plating Mating	Gold over Nickel
Material - Plating Termination	Tin over Nickel
Material - Resin	High Temperature Thermoplastic
Net Weight	6.841/g
Number of Rows	1
Orientation	Right Angle
PC Tail Length	3.50mm
PCB Locator	Yes
PCB Retention	Yes
PCB Thickness - Recommended	1.57mm
Packaging Type	Tube
Pitch - Mating Interface	10.00mm
Pitch - Termination Interface	10.00mm
Plating min - Mating	0.762µm
Plating min - Termination	2.540µm
Polarized to Mating Part	Yes
Polarized to PCB	Yes
Shrouded	Fully
Stackable	No
Surface Mount Compatible (SMC)	No
Temperature Range - Operating	-40°C to +105°C



Series image - Reference only

EU ELV
Not Relevant

EU RoHS Compliant REACH SVHC Not Contained Per -ED/01/2018 (15 January 2018) Halogen-Free Status Not Low-Halogen	China RoHS
--	-------------------

Need more information on product environmental compliance?

Email productcompliance@molex.com
Please visit the [Contact Us](#) section for any non-product compliance questions.

China ROHS	Green Image
ELV	Not Relevant
RoHS Phthalates	Not Contained

Search Parts in this Series
[42820](#) Series

Mates With
Mini-Fit Sr. Receptacle Housing with TPA
[42816](#)

Termination Interface: Style	Through Hole
Electrical	
Current - Maximum per Contact	50.0A
Voltage - Maximum	600V
Solder Process Data	
Duration at Max. Process Temperature (seconds)	030
Lead-freeProcess Capability	SMC&WAVE
Max. Cycles at Max. Process Temperature	003
Process Temperature max. C	235
Material Info	
Reference - Drawing Numbers	
Packaging Specification	PK-42820-910-001
Product Specification	PS-42815-001
Sales Drawing	SDA-42820-0002

This document was generated on 07/10/2018

PLEASE CHECK WWW.MOLEX.COM FOR LATEST PART INFORMATION