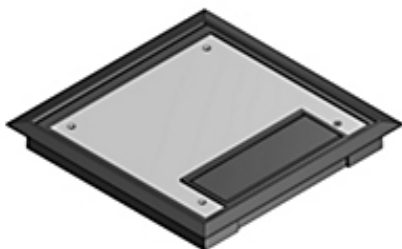




Actual



Representative

**Catalog Number:** 667-CST-SW-BLK  
**Product ID:** 7TAA003140R0000  
**UPC Number:** 78599103273  
**Status:** Active

Cover and Flange for Recessed Service Floor Box, 10.63 Inches Square, Flange Height .188 Inches, Black, Non-Metallic

- Factory installed gaskets reduce installation time
- Recessed cover plate accepts tile or carpet to blend into existing floor.
- Dust gasket on the cord shields the floor box from dust and debris.
- Lid snaps securely shut and does not require a locking screw
- Cord can be locked in the open position to protect power and data cables.

#### North American Specifications (UNSPSC)

|                  |  |
|------------------|--|
| UNSPSC           | 39121307 Floor boxes                               |
| IGCC             | 4432 Floor boxes                                   |
| Brand Name       | Steel City   |
| Type             | Recessed Service                                   |
| Special Features | Factory installed gaskets reduce installation time |
| Application      | For use with 667 and AFM 8 series floor boxes      |
| Standard         | UL E2969   |
| Material         | Non-Metallic                                       |
| Color            | Black  |

#### European Specifications (ETIM)

|                        |  |
|------------------------|--|
| ETIM                   | EC001906 Mounting cover for underfloor draw-in box |
| Mounting opening       | Square   |
| Cover mounting opening | Y  |
| Floor maintenance      | Dry  |
| Material               | Other  |

#### Packaging

|                           |                |
|---------------------------|----------------|
| Inner Quantity            | 1              |
| Inner Dimensions (inches) | 11x11x1.5      |
| Outer Quantity            | 4              |
| Outer Dimensions (inches) | 12.7x10.9x6.7  |
| Weight Uom                | 3.81 lbs. Each |

#### Documents / Support Tools

|                                       |                      |
|---------------------------------------|----------------------|
| Technical Drawing / Data Sheet        | WSD-000060           |
| Technical Drawing / Data Sheet Canada | Available on Website |
| Instruction Sheet                     | TA02623-TB2          |

**For further technical assistance, please contact us...**

Thomas & Betts - USA  
 8155 T&B Blvd.  
 Memphis, TN 38125  
 www.tnb.com

T&B Technical Support  
 MS 3B-50  
 8155 T&B Blvd.  
 Memphis, TN 38125

Hours: 7AM - 6PM CDT  
 Monday-Friday  
 Phone: (888) 862-3289  
 Fax: (901) 252-1321  
 Email:techsupport@tnb.com