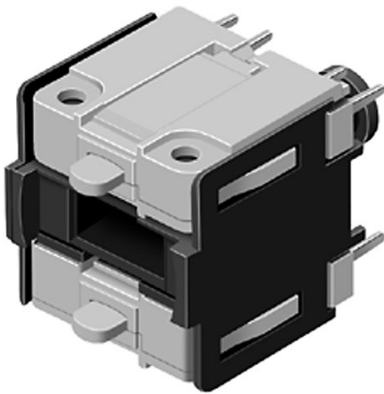


# EAO – Your Expert Partner for Human Machine Interfaces

## 71-672.026 - Switching element for illuminated pushbutton and mushroom-head pushbutton



*Attention: The preview is based on a sample product. This can differ from your current configuration.*

### Other Attributes

Weight 0,005 kg

### Connection Method

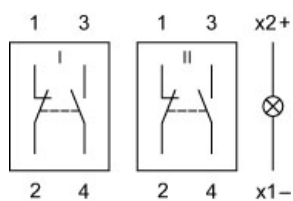
Terminal PCB

### Switching element

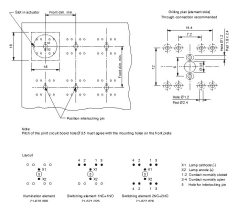
Switching system Snap-action switching element  
Contacts 2 NC + 2 NO  
Switching current 3 A  
Contact material  
Switching voltage 250 V AC

# EAO – Your Expert Partner for Human Machine Interfaces

## Wiring diagram



## Component layout



## Additional information

Including locking pin