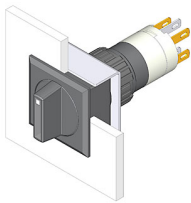


# EAO – Your Expert Partner for Human Machine Interfaces

## 52-131.022 - Selector switch actuator 2 positions square, flush design

### 52-131.022 - Selector switch actuator 2 positions square, flush design



*Attention: The preview is based on a sample product. This can differ from your current configuration.*

#### Mounting

Design flush

#### Other Attributes

Weight 0,006 kg

#### Operating-/Indication part

Switching angle 42° right  
Lever illumination  
Lever shape short  
Lever material Plastic

#### IP-Rating

Front protection IP65

#### Connection Method

Terminal Solder 2.8 x 0.5 mm

#### Actuator

Switching action Rest - Momentary

#### Switching element

Rotary positions 2  
Switching system Snap-action switching element  
Contacts 1 NC + 1 NO  
Switching current 5 A  
Contact material gold-plated silver  
Switching voltage 250 V AC

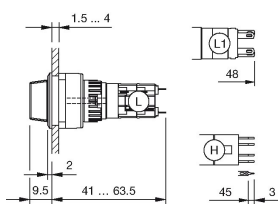
#### Function

Selector switch

# EAO – Your Expert Partner for Human Machine Interfaces

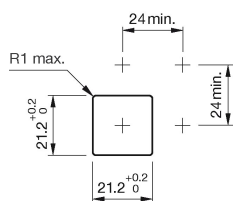
## 52-131.022 - Selector switch actuator 2 positions square, flush design

### Dimensions

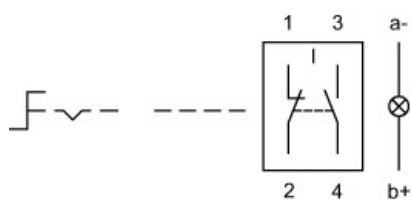


H = Universal terminal 2.0 x 0.5 mm

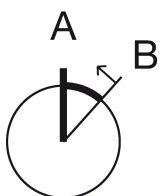
### Mounting cut-outs



### Wiring diagram



### Switching positions



### Additional information

illuminative

### Legend

Contacts: NC = Normally closed, NO = Normally open  
Switching action: A = Rest, B = Momentary