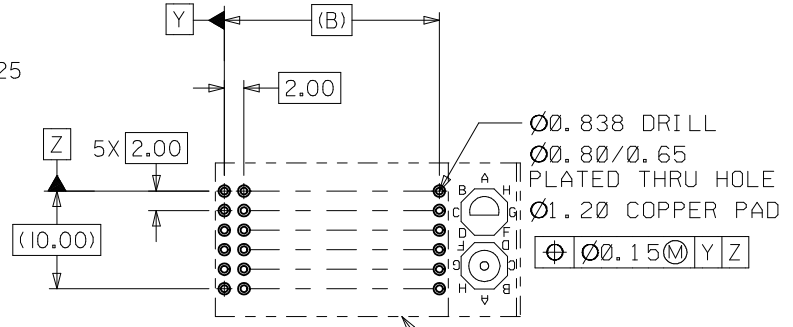
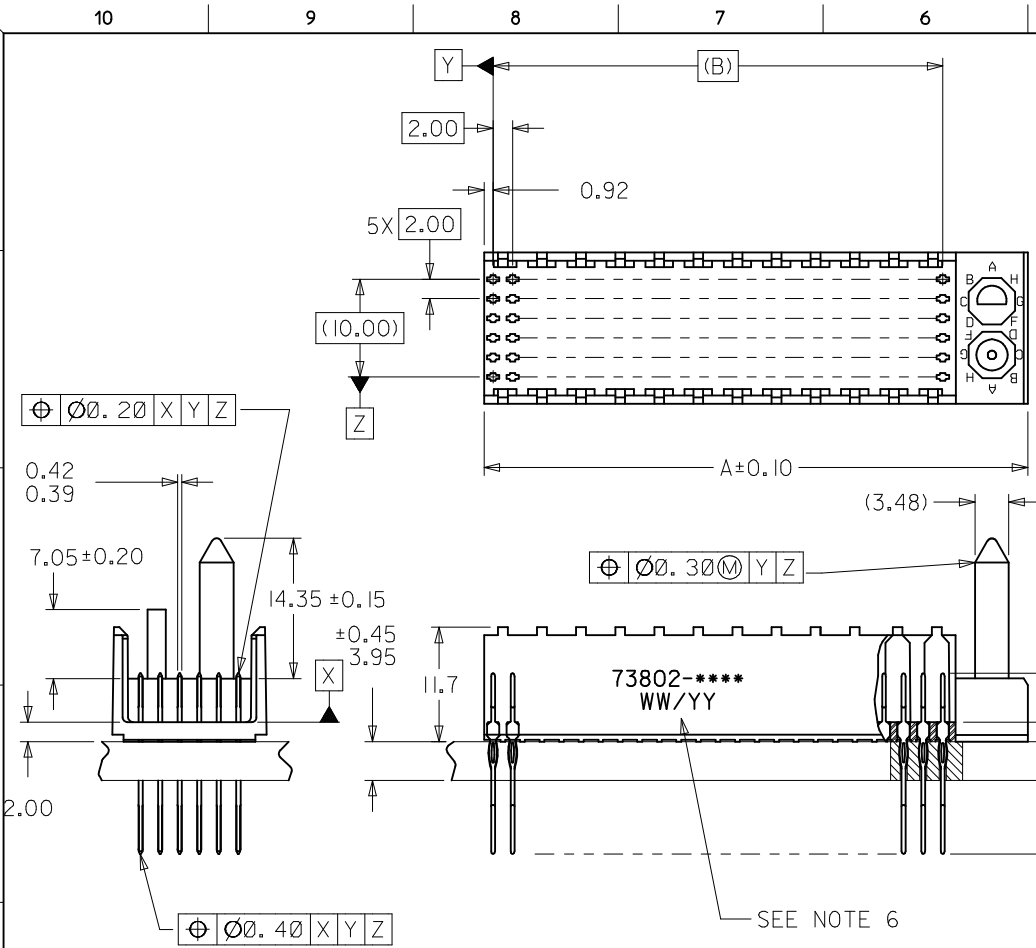


MATERIAL NUMBER	NUMBER OF CONTACTS	DIM "A"	DIM "B"	DIM "M"	PLATING
73802-00**	72	31.6	22.00	5.00	GOLD/GOLD FLASH
73802-02**	72	31.6	22.00	6.00	GOLD/GOLD FLASH
73802-10**	144	55.6	46.00	5.00	GOLD/GOLD FLASH
73802-12**	144	55.6	46.00	6.00	GOLD/GOLD FLASH
73802-20**	72	31.6	22.00	5.00	*GOLD/MATTE TIN
73802-22**	72	31.6	22.00	6.00	*GOLD/MATTE TIN
73802-30**	144	55.6	46.00	5.00	*GOLD/MATTE TIN
73802-32**	144	55.6	46.00	6.00	*GOLD/MATTE TIN

*FORMERLY TIN/LEAD



PCB LAYOUT: COMPONENT SIDE
RECOMMENDED PCB THICKNESS: 3.95±0.45

NOTES:

1. MATERIALS: HOUSING - LIQUID CRYSTAL POLYMER (LCP)
GLASS-FILLED, UL 94V-0, COLOR: BLACK.
TERMINAL - PHOSPHOR BRONZE.
2. FINISH: SELECTIVE GOLD (Au) IN CONTACT AREA, 0.76 MICROMETERS MINIMUM THICKNESS;
NICKEL (Ni) AND GOLD FLASH OVERALL.
SELECTIVE GOLD (Au) IN CONTACT AREA, 0.76 MICROMETERS MINIMUM THICKNESS;
SELECTIVE MATTE TIN (Sn) ON IN TAIL AREA.
NICKEL (Ni) OVERALL.
3. THIS PART CONFORMS TO MOLEX PRODUCT SPECIFICATION PS-73780-9999.
4. FOR MIXED CONTACT MATING LENGTHS, CONSULT FACTORY FOR AVAILABILITY.
5. PACKAGE PER 70873-0818.
6. PARTS MARKED WITH PART NUMBER AND DATE CODE ON EITHER SIDE,
APPROXIMATELY WHERE SHOWN.

LEAD FREE CONVERSION EC NO: UCP2013-3253 DRAWN BY: RWHIPPLE 2013/02/05 CHKD BY: MWOLFE 2013/02/05 APPR: SMILLER 2013/08/05	QUALITY SYMBOLS	GENERAL TOLERANCES (UNLESS SPECIFIED)	DIMENSION STYLE	SCALE	DESIGN UNITS	THIRD ANGLE PROJECTION
	$\nabla F/0$ $\nabla E/0$ $\nabla F/0$	mm	MM ONLY	2:1	METRIC	
		INCH				
		4 PLACES ± --- ± --- 3 PLACES ± --- ± --- 2 PLACES ± 0.05 ± --- 1 PLACE ± 0.10 ± --- 0 PLACE ± --- ± ---				

ANGULAR ±1/2° DRAFT WHERE APPLICABLE MUST REMAIN WITHIN DIMENSIONS	MATERIAL NO.	DOCUMENT NO.	SHEET NO.
	SEE CHART	SD-73802-001	1 OF 2
	THIS DRAWING CONTAINS INFORMATION THAT IS PROPRIETARY TO MOLEX INCORPORATED AND SHOULD NOT BE USED WITHOUT WRITTEN PERMISSION		

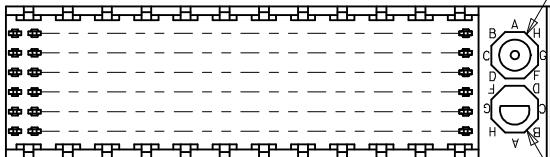
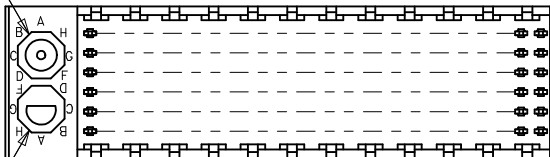
SALES ASSEMBLY
HDM DOUBLE-END MIDPLANE
POLAR/GUIDE OPTION

molex

10 9 8 7 6 5 4 3 2 1

LOCATION A

LOCATION B



LOCATION B

REF. MATERIAL NUMBER 73802-1009
GUIDE PIN IS IN LOCATION A
POLARIZING KEY IS IN LOCATION B, POSITION E

REF. MATERIAL NUMBER 73802-1008
GUIDE PIN IS IN LOCATION B
POLARIZING KEY IS IN LOCATION A, POSITION E

LOCATION A

MATERIAL NUMBER ASSIGNMENT

73802- * * * *

- 0 = 72-CIRCUIT, GOLD/GOLD FLASH
- 1 = 144-CIRCUIT, GOLD/GOLD FLASH
- 2 = 72-CIRCUIT, *GOLD/MATTE TIN
- 3 = 144-CIRCUIT, *GOLD/MATTE TIN

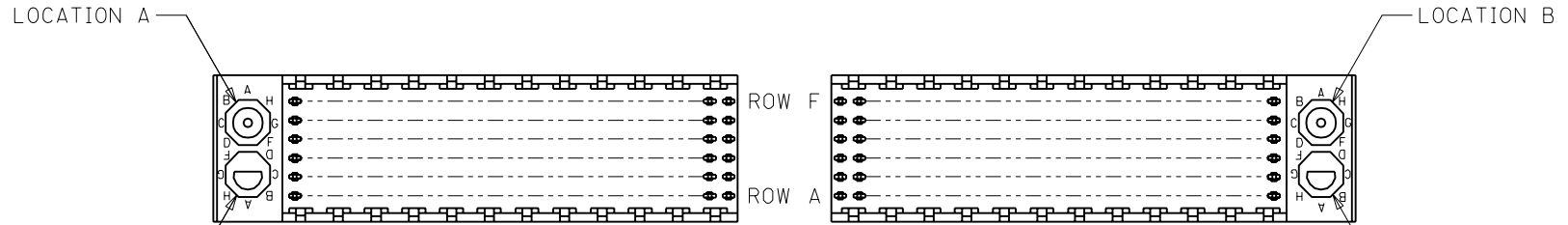
*FORMERLY TIN/LEAD

- 0 = 5.00 MATING LENGTH
- 1 = RESERVED
- 2 = 6.00 MATING LENGTH

NUMBER	GUIDE POST LOCATION	POLAR KEY POSITION
00	B	
01	A	A
02	B	
03	A	B
04	B	
05	A	C
06	B	
07	A	D
08	B	
09	A	E
10	B	
11	A	F
12	B	
13	A	G
14	B	
15	A	H
16	B	
17	A	N/A
18	N/A	

SEE SHEET 1 EC NO: UCP2013-3253 DRWN:RWHIPPLE 2013/02/05 CHKD:HWOLFE 2013/02/05 APPR:SMILLER 2013/08/05	QUALITY SYMBOLS	GENERAL TOLERANCES (UNLESS SPECIFIED)	DIMENSION STYLE	SCALE	DESIGN UNITS	THIRD ANGLE PROJECTION
	$\nabla = 0$ $\nabla = 0$ $\nabla = 0$	mm INCH 4 PLACES ± --- ± --- 3 PLACES ± --- ± --- 2 PLACES ± 0.05 ± --- 1 PLACE ± 0.10 ± --- 0 PLACE ± --- ± ---	MM ONLY	1:1	METRIC	DRAWN BY DATE RWHIPPLE 2013/02/05 CHECKED BY DATE SREED 97/05/19 APPROVED BY DATE SMILLER 2013/08/05
	ANGULAR ± 1/2° DRAFT WHERE APPLICABLE MUST REMAIN WITHIN DIMENSIONS	MATERIAL NO. SEE CHART	TITLE SALES ASSEMBLY HDM DOUBLE-END MIDPLANE POLAR/GUIDE OPTION	DOCUMENT NO. SD-73802-001	SHEET NO. 2 OF 2	
	THIS DRAWING CONTAINS INFORMATION THAT IS PROPRIETARY TO MOLEX INCORPORATED AND SHOULD NOT BE USED WITHOUT WRITTEN PERMISSION					

9 8 7 6 5 4 3 2 1



REF. MATERIAL NUMBER 73802-1009
 GUIDE PIN IS IN LOCATION A
 POLARIZING KEY IS IN LOCATION B, POSITION E

REF. MATERIAL NUMBER 73802-1008
 GUIDE PIN IS IN LOCATION B
 POLARIZING KEY IS IN LOCATION A, POSITION E

MATERIAL NUMBER ASSIGNMENT

73802- * * * *

- 0 = 72-CIRCUIT, GOLD/GOLD FLASH
- 1 = 144-CIRCUIT, GOLD/GOLDFLASH
- 2 = 72-CIRCUIT, GOLD/TIN-LEAD
- 3 = 144-CIRCUIT, GOLD/TIN-LEAD

- 0 = 5.00 MATING LENGTH
- 1 = RESERVED
- 2 = 6.00 MATING LENGTH

NUMBER	GUIDE POST LOCATION	POLAR KEY POSITION
00	B	
01	A	A
02	B	
03	A	B
04	B	
05	A	C
06	B	
07	A	D
08	B	
09	A	E
10	B	
11	A	F
12	B	
13	A	G
14	B	
15	A	H
16	B	
17	A	N/A
18	N/A	

SEE SHEET 1
 EC NO. UDT2000-0277
 DRWN:JBINGHAM 99/09/21
 CHK: REED 99/09/21
 APPR:CBIXLER 99/09/21

DESCRIPTION
 MAJOR $\nabla = 0$
 CRITICAL $\nabla C = 0$

REV
 E

QUALITY SYMBOLS

GENERAL TOLERANCES: (UNLESS SPECIFIED)

	mm	INCH
4 PLACES	$\pm 0.$	$\pm.$
3 PLACES	$\pm 0.$	$\pm.$
2 PLACES	$\pm 0.N/A$	$\pm.$
1 PLACE	$\pm 0.N/A$	$\pm.$

ANGULAR: $\pm 1/2^\circ$

DRAFT WHERE APPLICABLE MUST REMAIN WITHIN DIMENSIONS

SCALE NO:NE mm INCH

DESIGN UNITS

DRAWN BY & DATE
 JBINGHAM 97/05/19

CHECKED BY & DATE
 SREED 97/05/19

APPROVED BY & DATE
 CBIXLER 97/05/19

CAD FILENAME
 S73802X2.DGN

DIMENSIONS: mm INCH mm ONLY

SHT REV
 REVISE ON CAD ONLY

THIRD ANGLE PROJECTION

TITLE: SALES ASSEMBLY
 HDM DOUBLE-END MIDPLANE
 POLAR/GUIDE OPTION

MATERIAL NO. SEE CHART

DRAWING NO. SD-73802-001

SHEET NO. 2

THIS DRAWING CONTAINS INFORMATION THAT IS PROPRIETARY TO MOLEX INCORPORATED AND SHOULD NOT BE USED WITHOUT WRITTEN PERMISSION.

SIZE B