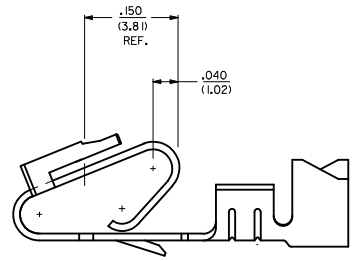
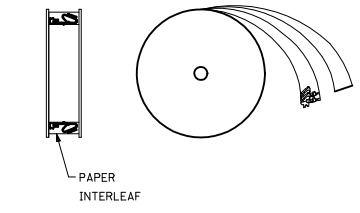


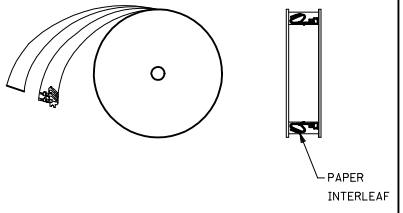
ALTERNATE GEOMETRY  
SEE NOTE 10



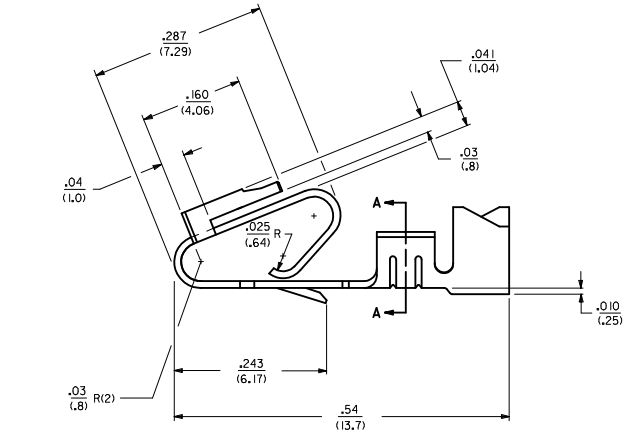
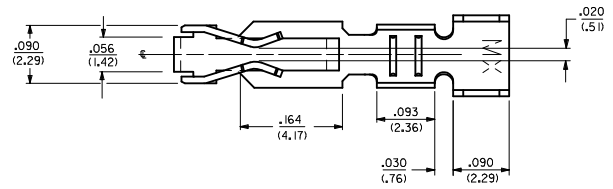
SELECTIVE PLATING  
LOCATION



WINDING DETAIL 'A'

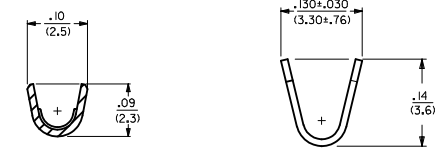


WINDING DETAIL 'B'



CUT OFF DIM.

- NOTES:
- MATERIAL: SEE LEGEND
  - FINISH:
    - 909 - OVERALL HOT TIN DIP: .000100/(0.00254) MIN.
    - 102 - OVERALL TIN: .000200/(0.00508) MIN.
    - OVERALL COPPER: .000100/(0.00254) MIN.
    - 132 - OVERALL TIN: .000200/(0.00508) MIN.
    - OVERALL COPPER: .000200/(0.00508) MIN.
    - 503 - OVERALL HARD GOLD: .000030/(0.00076) MIN.
    - OVERALL NICKEL: .000050/(0.00127) MIN.
    - 550 - SELECT HARD GOLD: .000015/(0.00038) MIN.
    - OVERALL NICKEL: .000030/(0.00076) MIN.
    - OVERALL HARD GOLD FLASH: .000002/(0.00005) MIN.
    - 555 - SELECT HARD GOLD: .000015/(0.00038) MIN.
    - OVERALL NICKEL: .000030/(0.00076) MIN.
    - 558 - SELECT HARD GOLD: .000030/(0.00076) MIN.
    - OVERALL NICKEL: .000050/(0.00127) MIN.
    - OVERALL HARD GOLD FLASH: .000002/(0.00005) MIN.
    - 561 - SELECT HARD GOLD: .000030/(0.00076) MIN.
    - OVERALL NICKEL: .000050/(0.00127) MIN.
  - PRODUCT SPECIFICATION: PS-40-02
  - PACKAGING SPECIFICATION: CHAIN FORM: SEE PK-6838-001  
LOOSE FORM: SEE PK-2759-001
  - TERMINAL FOR USE IN HOUSING SERIES 6442 AND 47695.
  - SEE 7258 SERIES FOR THIS PART WITH CRIMP FOR 22-26 AWG. WIRE.
  - CRIMP FOR 18 TO 20 GA. WIRE WITH MAX. INSULATION DIA. OF .100/(2.79).  
STRIP LENGTH OF .125/100 / (3.18/2.54)
  - DIMENSIONS GIVEN ACROSS CENTERLINES ARE SYMMETRICAL ABOUT THOSE CENTERLINES WITHIN HALF THE TOTAL TOLERANCE.
  - THIS PART CONFORMS TO CLASS B REQUIREMENTS OF COSMETIC SPECIFICATION PS-45499-002.
  - ALTERNATE GEOMETRY PRESENT ON SOME PART NUMBERS. SEE SHEET 2.



SECTION A-A

- LEGEND: 6838- ( )
- WINDING
    - A= PER DETAIL A
    - BLANK= PER DETAIL B
  - FORM
    - BLANK= CHAIN
    - L= LOOSE
  - PLATING
    - SEE NOTE 2
- MATERIAL:  
(.271/.0106 THK  
BLANK=BRASS  
A=PHOS BRONZE

ADD ALT. GEOMETRY EC NO. UCF2011-0681 DRAWN BY: CHYKSSOUSEK CHECKED BY: APPR:FSMTH DATE: 2011/02/23 DATE: 2011/02/25	QUALITY SYMBOLS ▽=0 ▽=0	GENERAL TOLERANCES (UNLESS SPECIFIED)		DIMENSION STYLE IN/MM	SCALE ---	DESIGN UNITS INCH	THIRD ANGLE PROJECTION	
		4 PLACES ± --- ± ---	3 PLACES ± --- ± .010	DRAWN BY GUZIK	DATE 11/15/89	TITLE TRIFURCON TERMINAL CRIMP TYPE, .156 CENTERS 18 TO 20 AWG WIRE		
		2 PLACES ± 0.25 ± .015	1 PLACE ± 0.36 ± ---	CHECKED BY PATEL	DATE 11/15/89	MOLEX INCORPORATED		
		ANGULAR ±1/2°		APPROVED BY LENZ	DATE 11/15/89	DOCUMENT NO. SD-6838		
DRAFT WHERE APPLICABLE MUST REMAIN WITHIN DIMENSIONS		MATERIAL NO. SEE CHART		SIZE D		SHEET NO. 1 OF 2		

20 19 18 17 16 15 14 13 12 11 10 9 8 7 6 5 4 3 2 1

6838-(\*)\*\*

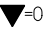
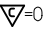
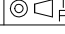

PART NO.	ENG. NO.	
08-50-0187	6838-(P909)	SEE NOTE 1
08-50-0189	6838-(P909)L	SEE NOTE 1
08-50-0275	6838-(P909)-A	
08-50-0026	6838-(P102)	
	6838-(P102)L	
08-50-0028	6838-(102)	
08-50-0029	6838-(102)L	

6838-A(\*)\*\*

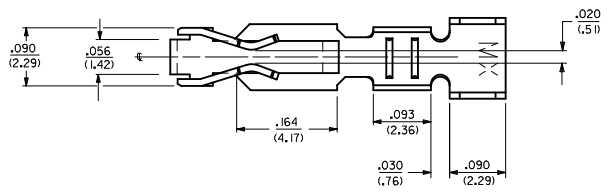
PART NO.	ENG. NO.	
08-58-0187	6838-A(P558)	
08-58-0189	6838-A(P558)L	
08-60-0001	6838-A(132)	
08-60-0002	6838-A(132)L	
08-58-0102	6838-A(558)	
	6838-A(558)L	
08-58-0108	6838-A(503)	
08-58-0109	6838-A(503)L	
08-52-0112	6838-A(P909)	SEE NOTE 1
08-52-0113	6838-A(P909)L	SEE NOTE 1
08-50-0024	6838-A(102)	
08-50-0251	6838-A(102)L	
08-58-0105	6838-A(P555)	
08-58-0106	6838-A(P555)L	
08-58-0110	6838-A(P561)	SEE NOTE 1
08-58-0111	6838-A(P561)L	SEE NOTE 1
08-58-0118	6838-A(561)	
08-58-0119	6838-A(561)L	
08-58-0131	6838-A(550)	
08-58-0132	6838-A(550)L	

NOTES:

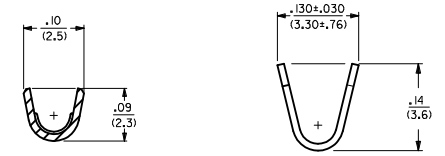
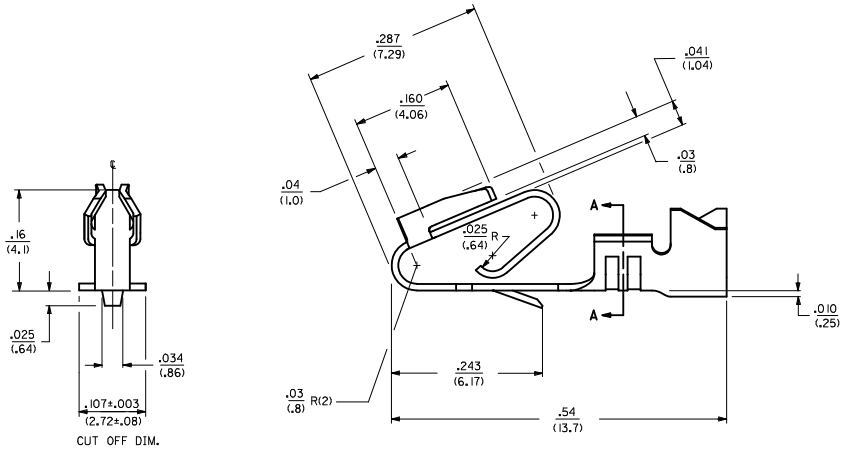
1. PART MANUFACTURED WITH ALTERNATE GEOMETRY. SEE SHEET 1.

<b>ADD ALT. GEOMETRY</b> IEC NO. UCFP2011-0681 DRAWN/KIPPER 2010/09/14 CHKD/SSOUSEK 2011/02/23 APPR/FSMTH 2011/02/25	<b>QUALITY SYMBOLS</b>  = 0.05  = 0.1	<b>GENERAL TOLERANCES (UNLESS SPECIFIED)</b>		<b>DIMENSION STYLE</b> IN/MM	<b>SCALE</b> ---	<b>DESIGN UNITS</b> INCH	 THIRD ANGLE PROJECTION
		4 PLACES # --- # --- 3 PLACES # --- # --- 2 PLACES # --- # --- 1 PLACE # --- # ---	mm INCH # --- # --- # --- # --- # --- # --- # --- # ---	<b>DRAWN BY</b> DATE GUZIK 11/15/89	<b>TITLE</b> TRIFURCON TERMINAL CRIMP TYPE, .156 CENTERS 18 TO 20 AWG WIRE		
		<b>CHECKED BY</b> DATE PATEL 11/15/89	<b>APPROVED BY</b> DATE LENZ 11/15/89		<b>MOLEX INCORPORATED</b>		
		<b>DRAFT WHERE APPLICABLE MUST REMAIN WITHIN DIMENSIONS</b>	<b>MATERIAL NO.</b> SEE CHART	<b>DOCUMENT NO.</b> SD-6838	<b>SHEET NO.</b> 2 OF 2		

19 18 17 16 15 14 13 12 11 10 9 8 7 6 5 4 3 2 1

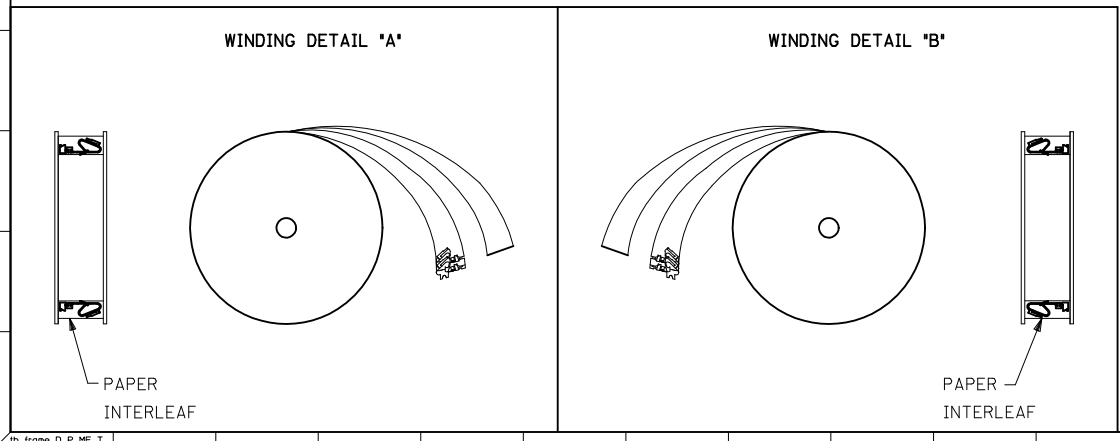
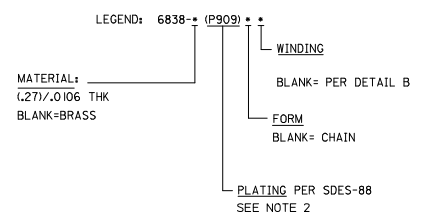


- NOTES:
1. MATERIAL: SEE LEGEND
  2. FINISH: 909 - OVERALL HOT TIN DIP: .000100/10.00254) MIN.
  3. PRODUCT SPECIFICATION: PS-40-02
  4. PACKAGING SPECIFICATION: PK-6838-001
  5. PART IS FOR USE WITH 18 TO 20 GA. WIRE WITH MAX. INSULATION DIA. OF .110/(2.79), STRIP LENGTH OF .125/.100 / (3.18/2.54).
  6. SEE 7258 SERIES FOR THIS PART WITH CRIMP FOR 22-26 AWG. WIRE.
  7. TERMINAL FOR USE IN 6442 AND 41695 SERIES HOUSINGS.
  8. DIMENSIONS GIVEN ACROSS CENTERLINES ARE SYMMETRICAL ABOUT THOSE CENTERLINES WITHIN HALF THE TOTAL TOLERANCE.
  9. THIS PART CONFORMS TO CLASS B REQUIREMENTS OF COSMETIC SPECIFICATION PS-45499-002.



SECTION A-A

CUT OFF DIM.



UPDATE GEOMETRY IEC NO. UCP2011-0681 DRAWN/KIPPER 2010/09/14 CHYKOS/SSOUSEK 2011/02/23 APPR:FSM/TH 2011/02/25	QUALITY SYMBOLS	GENERAL TOLERANCES (UNLESS SPECIFIED)	DIMENSION STYLE	SCALE	DESIGN UNITS	THIRD ANGLE PROJECTION
	▽=0	mm INCH	IN/MM	---	INCH	☉
	▽=0	4 PLACES ± --- ± ---	DRAWN BY	DATE	TITLE	
	▽=0	3 PLACES ± --- ± .010	JJS	07/29/04	TRIFURCON TERMINAL CRIMP TYPE .156 CENTERS 18 TO 20 AWG WIRE	
	2 PLACES ± 0.25 ± .015	CHECKED BY	DATE			
	1 PLACE ± 0.36 ± ---	KSS	07/29/04			
	ANGULAR ±1/2°	APPROVED BY	DATE			
	DRAFT WHERE APPLICABLE MUST REMAIN WITHIN DIMENSIONS	YM	07/29/04			
		MATERIAL NO.	50291639			
		DOCUMENT NO.	SD-6838-001			
		SHEET NO.	1 OF 1			