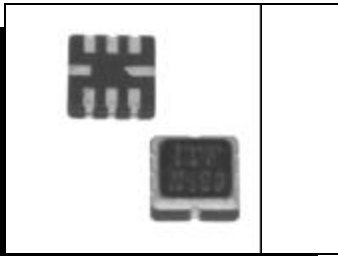


CERAMIC SURFACE-MOUNT
SAW FILTER
AFS868.35E



5.0 x 5.0 x 1.35mm

FEATURES:

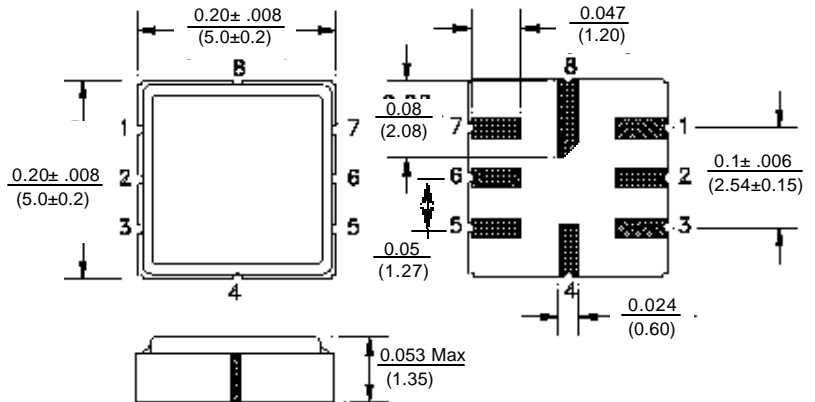
- SAW Filter 868.35MHz.
- Low Loss, Compact.
- SMD makes reflow soldering possible.
- Gold plated terminals.

COMMON APPLICATIONS:

- Wireless car alarm, Garage door opener. (RKE)
- Mobile communications systems

ABSOLUTE MAXIMUM RATINGS:

DC voltage	±12 Vdc
Operating temperature	-35°C to +85°C
Maximum power dissipation	10dBm



STANDARD SPECIFICATIONS

CHARACTERISTICS	UNIT	min.	typ.	max.	
Center frequency	F _c	MHz	-	868.35	-
Insertion loss	IL	dB	-	4.0	5.5
3dB Pass band	BW ₃	kHz	-	1,200	-
Stopband attenuation	at F _c -21.4MHz	dB	30	40	-
	at F _c -10.7MHz	dB	15	30	-
	Ultimate		-	60	-
Turn-over temperature	T _o	°C	25	40	55
Temperature coefficient	T _c	ppm/C ²	-	0.032	-
Aging absolute first year	[A]	ppm	-	-	10

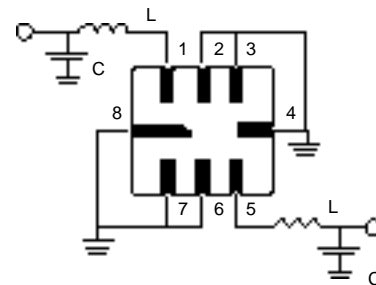
Dimensions: Inches (mm)

Pin No.	Function
1	Input
2	Input GND
5	Output
6	Output GND
3, 7	To be GNDed
4, 8	Case GND

Packaging option: -T for tape and reel, see appendix H.
Reflow profile, see appendix E. Reliability specifications,
Environmental and mechanical specifications, see page 91 in the Abracon Catalog

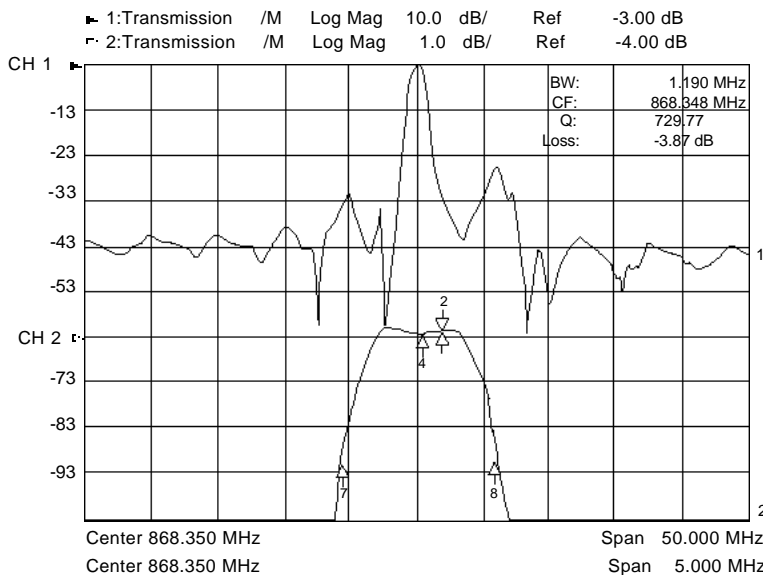
Maching circuit to 50 W

C=4-8 pF, L=2 turns of 0.5mm insulated copper, 3.0 ID (nH)



Marking:

AFS
868.35E



NOTE: All specifications and markings subject to change without notice

29 Journey • Aliso Viejo, CA 92656 • USA
(949) 448-7070 • Fax: (949) 448-8484

E-MAIL: abinfo@abracon.com • INTERNET ADDRESS: www.abracon.com

ABRACON IS
ISO 9001 / QS 9000
CERTIFIED

