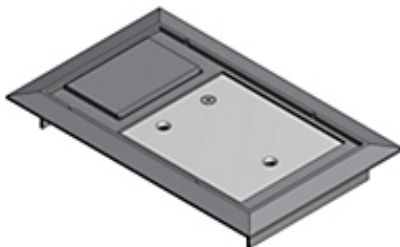


Actual



Representative

**Catalog Number:** 664-CST-SW-GRY  
**Product ID:** 7TAA003100R0006  
**UPC Number:** 78599103267  
**EAN Number:** 05415022443455  
**Status:** Active

Recessed Service Floor Box Cover, Length 8-1/8 Inches, Width 5-1/8 Inches, Gray, Polycarbonate with 5/32 Inch Steel Plate

- Factory installed gaskets reduce installation time
- Recessed cover plate accepts tile or carpet to blend into existing floor.
- Dust gasket on the cord shields the floor box from dust and debris.
- Lid snaps securely shut and does not require a locking screw
- Cord can be locked in the open position to protect power and data cables.

### Header

3D Model Available on Website

### North American Specifications (UNSPSC)

UNSPSC	39121307 Floor boxes
IGCC	4432 Floor boxes
Brand Name	Steel City
Type	Recessed Service
Special Features	Factory installed gaskets reduce installation time
Application	For use with 664 and AFM 2 series floor boxes
Standard	UL E2969
Material	Non-Metallic
Color	Gray
Knockouts	No

### European Specifications (ETIM)

ETIM	EC001906 Mounting cover for underfloor draw-in box
Mounting opening	Rectangular
Cover mounting opening	Y
Floor maintenance	Dry
Material	Other

### Packaging

Inner Quantity	1
Inner Dimensions (inches)	8.75x5.75x1.5
Outer Quantity	4
Outer Dimensions (inches)	9.7x8.3x6.9
Weight Uom	115 lbs. per 100

### Documents / Support Tools

Technical Data Sheet CA	Available on Website
Technical Data Sheet Global	wsd-000057
Instruction Sheet 1	ta02623-tb2

**For further technical assistance, please contact us...**

Thomas & Betts - USA  
 8155 T&B Blvd.  
 Memphis, TN 38125  
 www.tnb.com

T&B Technical Support  
 MS 3B-50  
 8155 T&B Blvd.  
 Memphis, TN 38125

Hours: 7AM - 6PM CDT  
 Monday-Friday  
 Phone: (888) 862-3289  
 Fax: (901) 252-1321  
 Email: techsupport@tnb.com