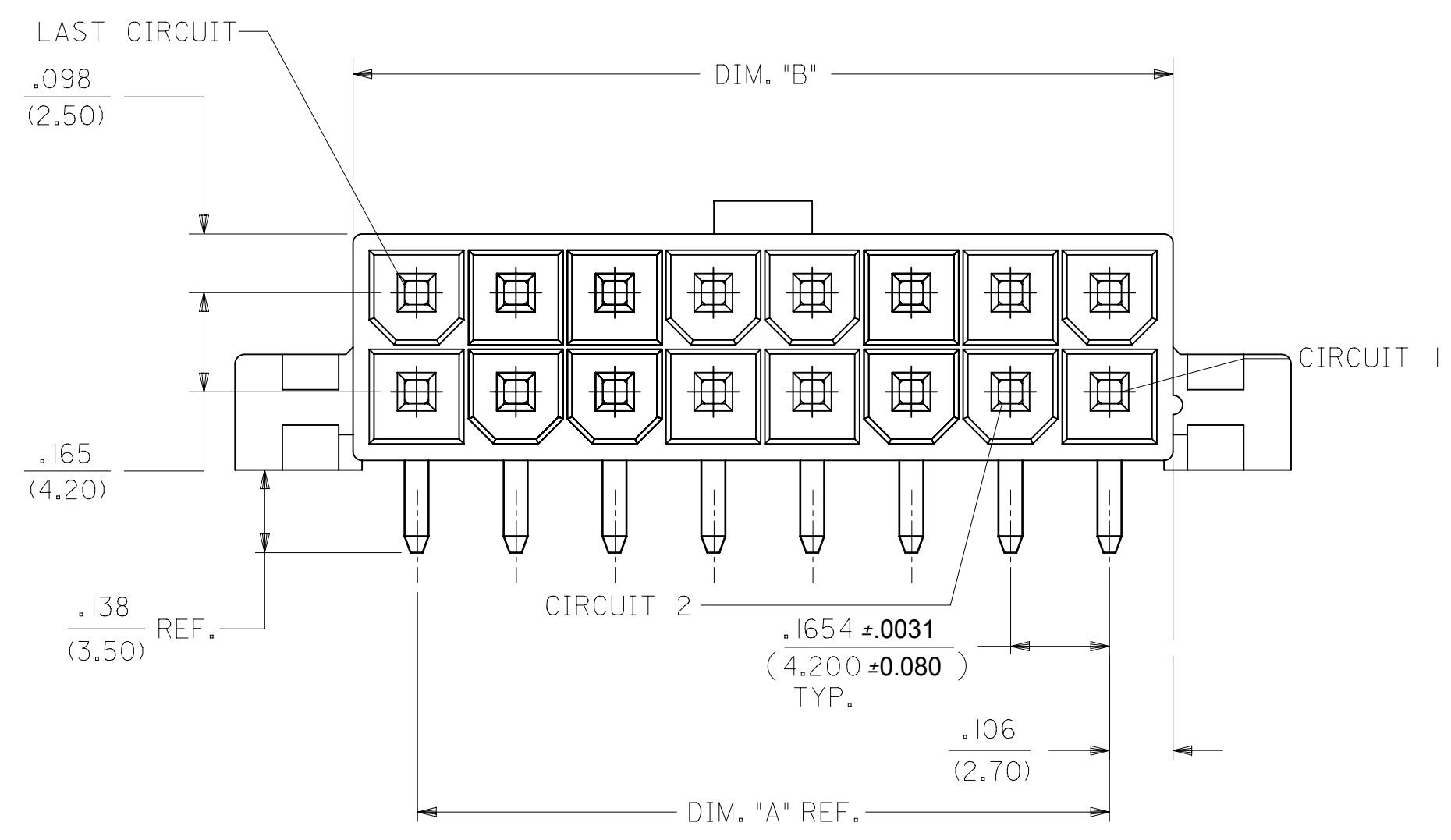
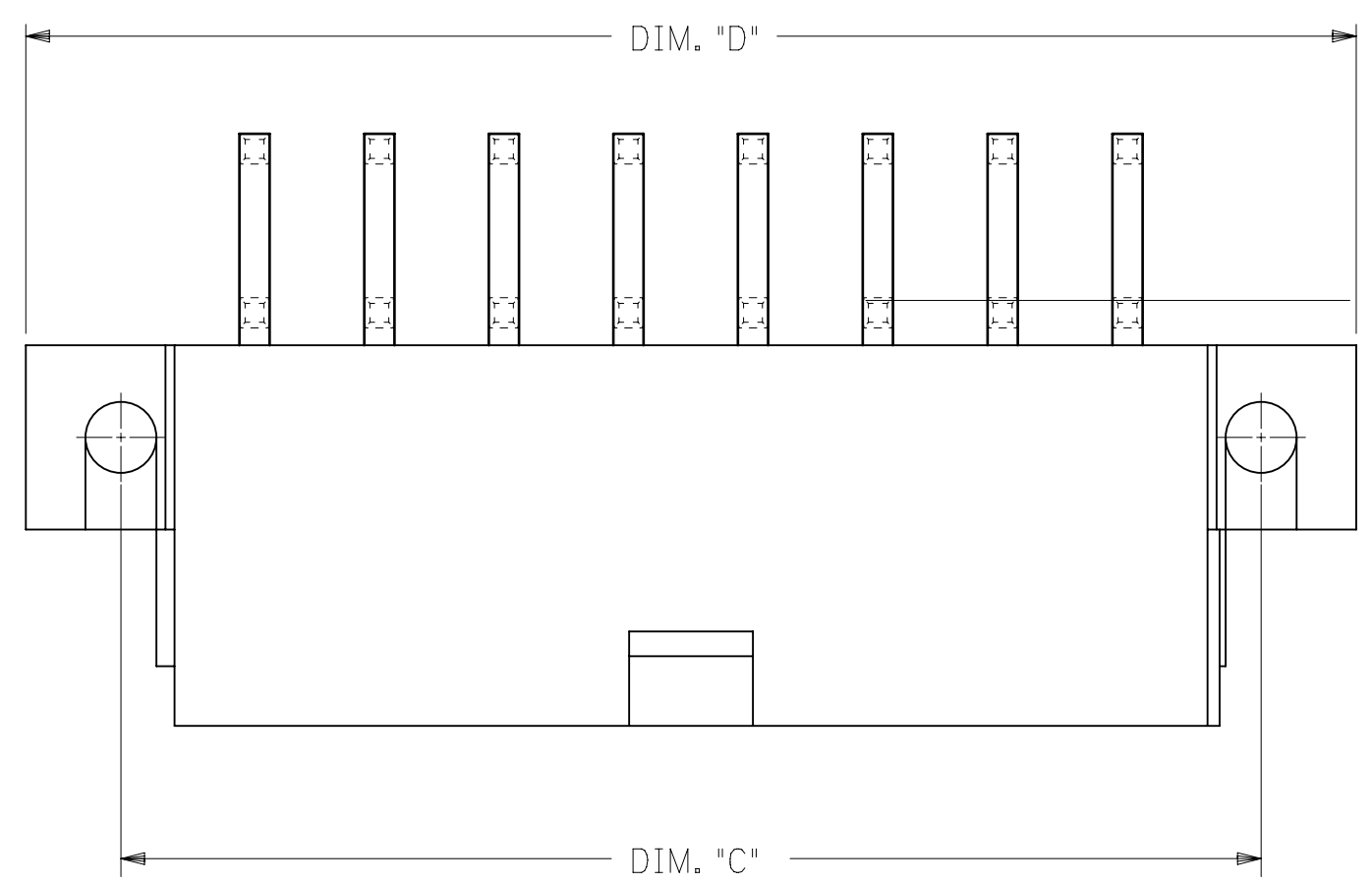
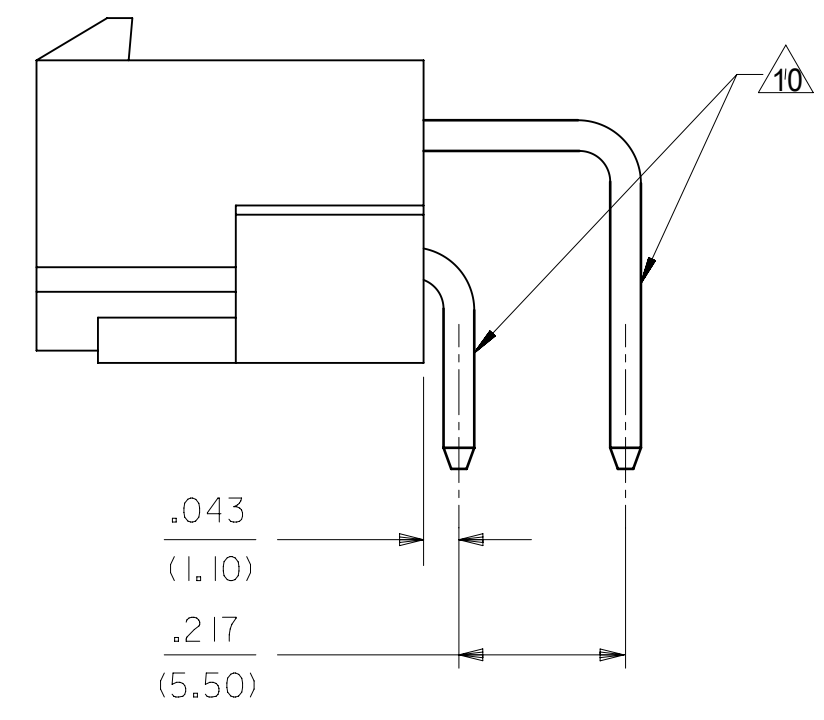


RECOMMENDED PCB HOLE LAYOUT VIEWED FROM COMPONENT SIDE



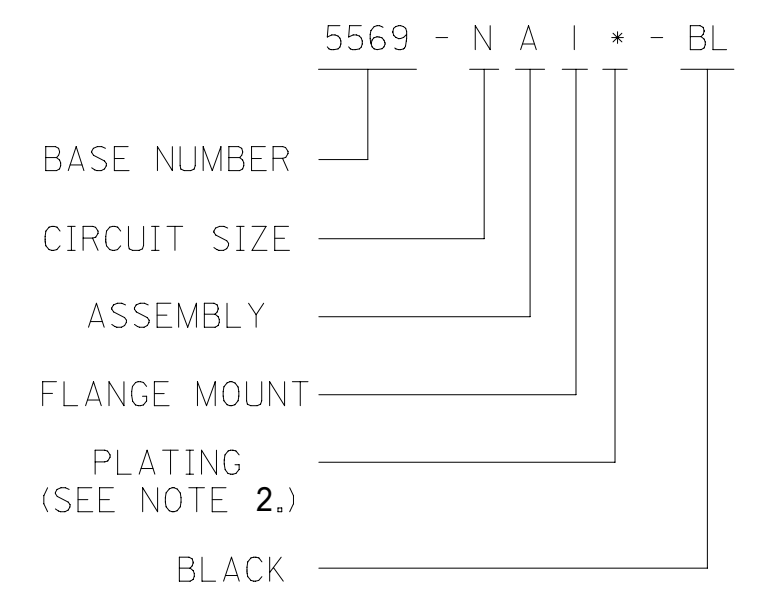
NOTES:

- 1) HOUSING MATERIAL:
BL - NYLON 6/6, U.L. 94V-2,
COLOR: BLACK.
- 2) TERMINAL MATERIAL: BRASS, ALLOY
- 3) PRODUCT SPECIFICATION: SEE PS-5556-001
- 4) PARTS ARE NOT DESIGNED FOR CURRENT SHARING.
- 5) PART MATES WITH MINI-FIT JR. RECEPTACLE #5557.
- 6) PART CONFORMS TO CLASS "B" REQUIREMENTS OF COSMETIC SPECIFICATION PS-45499-002.
- 7) PART IS DESIGNED FOR USE WITH #4 OR M3 SELF TAPPING SCREWS.
- 8) DISCOLORATION IN THE BANDOLIER CARRIER AREA OF THE PIN IS INHERENT TO THE PLATING PROCESS AND IS DUE TO THE MASKING EFFECT OF THE CARRIER. THIS DISCOLORATION IS IN A NON-FUNCTIONAL AREA OF THE PIN AND WILL NOT AFFECT THE PERFORMANCE OF THE HEADER ASSEMBLY.
- 9) CONNECTORS ARE NOT TO BE MATED OR UNMATED WHILE CIRCUITS ARE ALIVE.
10. FORMING MARKS ARE ACCEPTABLE.



| CIRCUIT SIZE | DIM. "A" | DIM. "B" | DIM. "C" | DIM. "D" |
|--------------|------------------|------------------|------------------|------------------|
| 2 | — | .213 (5.40) | .354 (9.00) | .606 (15.40) |
| 4 | .165 (4.20) | .378 (9.60) | .520 (13.20) | .772 (19.60) |
| 6 | .331 (8.40) | .543 (13.80) | .685 (17.40) | .937 (23.80) |
| 8 | .496 (12.60) | .709 (18.00) | .850 (21.60) | 1.102 (28.00) |
| 10 | .661 (16.80) | .874 (22.20) | 1.016 (25.80) | 1.268 (32.20) |
| 12 | .827 (21.00) | 1.039 (26.40) | 1.181 (30.00) | 1.433 (36.40) |
| 14 | .992 (25.20) | 1.205 (30.60) | 1.346 (34.20) | 1.598 (40.60) |
| 16 | 1.157 (29.40) | 1.370 (34.80) | 1.512 (38.40) | 1.764 (44.80) |
| 18 | 1.323 (33.60) | 1.535 (39.00) | 1.677 (42.60) | 1.929 (49.00) |
| 20 | 1.488 (37.80) | 1.701 (43.20) | 1.843 (46.80) | 2.094 (53.20) |
| 22 | 1.654 (42.00) | 1.866 (47.40) | 2.008 (51.00) | 2.260 (57.40) |
| 24 | 1.819 (46.20) | 2.031 (51.60) | 2.173 (55.20) | 2.425 (61.60) |

LEGEND:



| | | | | | | | | | |
|---|--|-----------------|------------------------|----------------|-------------------------|-----------------------------------|--|--------------------------------|--|
| THIS DRAWING CONTAINS INFORMATION THAT IS PROPRIETARY TO MOLEX ELECTRONIC TECHNOLOGIES, LLC AND SHOULD NOT BE USED WITHOUT WRITTEN PERMISSION | | | | | | | | | |
| SYMBOLS | | DIMENSION UNITS | | SCALE | | CURRENT REV DESC: MIGRATE TO ECTR | | | |
| ∇ = 0 | IN/MM | 4:1 | | | | | | | |
| ∇ = 0 | GENERAL TOLERANCES (UNLESS SPECIFIED) | | | | | | | | |
| ∇ = 0 | | MM | INCH | | | | | | |
| S = 0 | 4 PLACES | ± | ± | | | EC NO: 172489 | | | |
| ∇ = 0 | 3 PLACES | ± | ± 0.015 | | | DRWN: ANESSER 2018/01/26 | | | |
| ∇ = 0 | 2 PLACES | ± 0.38 | ± | | | CHK'D: JBELL 2018/02/20 | | | |
| ∇ = 0 | 1 PLACE | ± | ± | | | APPR: FSMITH 2018/02/22 | | | |
| ∇ = 0 | 0 PLACES | ± | ± | | | INITIAL REVISION: | | | |
| ∇ = 0 | ANGULAR TOL | ± 0.5 ° | | | DRWN: RJF 1991/12/18 | | | | |
| ∇ = 0 | DRAFT WHERE APPLICABLE MUST REMAIN WITHIN DIMENSIONS | | THIRD ANGLE PROJECTION | | APPR: FSMITH 2011/10/03 | | | | |
| ∇ = 0 | | | DRAWING | | SERIES | | | | |
| | | C-SIZE | | 5569 | | DOCUMENT NUMBER | | DOC TYPE DOC PART REVISION | |
| | | SEE SHEET 2 | | GENERAL MARKET | | 55690001-SD | | PSD 000 A | |
| | | | | | | MATERIAL NUMBER | | CUSTOMER | |
| | | | | | | SHEET NUMBER | | 1 OF 2 | |

THIS DRAWING REPLACES DRAWING SDA-5569-NA1*-BL

| B | | C | | D | | E | | F | | G | | H | |
|-------------|--------------|-----------|-------------|------------------|-------------|-------------|-------------|-----------|-------------|------------------|-------------|-------------|-------------|
| PART NUMBER | ENG. NUMBER | CKT. SIZE | MTG. OPTION | PLATING (NOTE 2) | HSG. MAT'L. | PART NUMBER | ENG. NUMBER | CKT. SIZE | MTG. OPTION | PLATING (NOTE 2) | HSG. MAT'L. | PART NUMBER | ENG. NUMBER |
| 39-31-8027 | 5569-02A1-BL | 2 | FLANGES | TIN OVER NICKEL | 94V-2 | | | | | | | | |
| | -04A1-BL | 4 | | | | | | | | | | | |
| 39-31-8067 | -06A1-BL | 6 | | | | | | | | | | | |
| 139-29-1088 | -08A1-BL | 8 | | | | | | | | | | | |
| | -10A1-BL | 10 | | | | | | | | | | | |
| 39-31-8127 | -12A1-BL | 12 | | | | | | | | | | | |
| -8147 | -14A1-BL | 14 | | | | | | | | | | | |
| -8167 | -16A1-BL | 16 | | | | | | | | | | | |
| -8187 | -18A1-BL | 18 | | | | | | | | | | | |
| -8207 | -20A1-BL | 20 | | | | | | | | | | | |
| -8227 | -22A1-BL | 22 | | | | | | | | | | | |
| 39-31-8247 | 5569-24A1-BL | 24 | FLANGES | TIN OVER NICKEL | 94V-2 | | | | | | | | |

| | | | | | | | | | | | | | | | | | | | | | | | |
|--|--|---|--|---------|--|------|--|--|--|--|--|---|--|--|--|--|--|--|--|--|--|--|--|
| SYMBOLS | | | | | | | | | | | | THIS DRAWING CONTAINS INFORMATION THAT IS PROPRIETARY TO MOLEX ELECTRONIC TECHNOLOGIES, LLC AND SHOULD NOT BE USED WITHOUT WRITTEN PERMISSION | | | | | | | | | | | |
| DIMENSION UNITS | | | | SCALE | | | | CURRENT REV DESC: MIGRATE TO ECTR | | | | | | | | | | | | | | | |
| IN/MM | | | | 1:1 | | | | <p>EC NO: 172489</p> <p>DRWN: ANESSER 2018/01/26</p> <p>CHK'D: JBELL 2018/02/20</p> <p>APPR: FSMITH 2018/02/22</p> <p>INITIAL REVISION:</p> <p>DRWN: RJF 1991/12/18</p> <p>APPR: FSMITH 2011/10/03</p> | | | | | | | | | | | | | | | |
| GENERAL TOLERANCES (UNLESS SPECIFIED) | | | | | | | | | | | | | | | | | | | | | | | |
| 4 PLACES | | ± | | MM | | INCH | | | | | | | | | | | | | | | | | |
| 3 PLACES | | ± | | ± 0.015 | | | | | | | | | | | | | | | | | | | |
| 2 PLACES | | ± | | 0.38 | | ± | | | | | | | | | | | | | | | | | |
| 1 PLACE | | ± | | ± | | | | | | | | | | | | | | | | | | | |
| 0 PLACES | | ± | | ± | | | | | | | | | | | | | | | | | | | |
| ANGULAR TOL | | | | ± 0.5 ° | | | | THIRD ANGLE PROJECTION | | | | DRAWING | | | | | | | | | | | |
| DRAFT WHERE APPLICABLE MUST REMAIN WITHIN DIMENSIONS | | | | | | | | C-SIZE | | | | SERIES | | | | | | | | | | | |
| | | | | | | | | 5569 | | | | MATERIAL NUMBER | | | | | | | | | | | |
| | | | | | | | | | | | | CUSTOMER | | | | | | | | | | | |
| | | | | | | | | | | | | SHEET NUMBER | | | | | | | | | | | |
| | | | | | | | | | | | | 2 OF 2 | | | | | | | | | | | |

molex

MINI-FIT JR RT. ANG. HDR ASSY WITH FLANGES, BLACK

PRODUCT CUSTOMER DRAWING

| | | | |
|-----------------|----------|----------|----------|
| DOCUMENT NUMBER | DOC TYPE | DOC PART | REVISION |
| 55690001-SD | PSD | 000 | A |