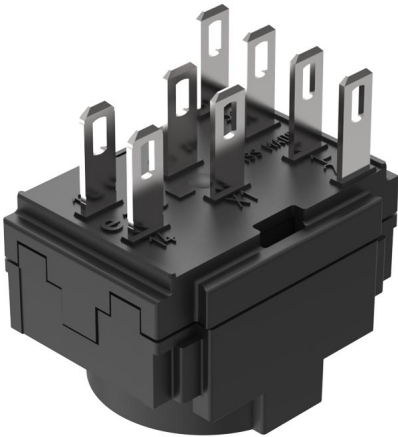


# EAO – Your Expert Partner for Human Machine Interfaces

## 61-8480.12 - Switching element for pushbutton and keylock- and selector switch 2 positions

### 61-8480.12 - Switching element for pushbutton and keylock- and selector switch 2 positions



*Attention: The preview is based on a sample product. This can differ from your current configuration.*

#### Other Attributes

Weight 0,007 kg

#### Connection Method

Terminal Solder 2.8 x 0.5 mm

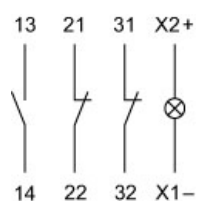
#### Switching element

Switching current 5 A  
Switching system Snap-action switching element  
Contacts 2 NC + 1 NO  
Contact material Silver  
Switching voltage 250 V AC/DC

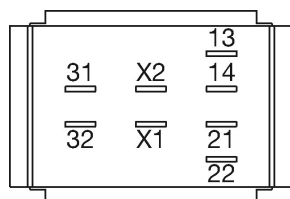
# EAO – Your Expert Partner for Human Machine Interfaces

61-8480.12 - Switching element for pushbutton and keylock- and selector switch 2 positions

## Wiring diagram



## Component layout



## Additional information

with lamp terminal

We offer a dismantling tool Part No. 61-9711.0 for dismantling of the switching element

## Legend

Contacts: NC = Normally closed, NO = Normally open