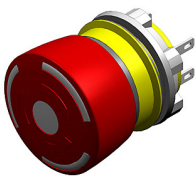


EAO – Your Expert Partner for Human Machine Interfaces

84-5030.0020 - Emergency-stop switch complete, foolproof EN IEC 60947-5-5

84-5030.0020 - Emergency-stop switch complete, foolproof EN IEC 60947-5-5



Attention: The preview is based on a sample product. This can differ from your current configuration.

Mounting

Mounting cut-out	Ø 22,3 mm
Design	raised
Behind panel depth	18 mm

Front

Front dimension	Ø 32 mm
Front shape	round

Other Attributes

Weight	0,028 kg
--------	----------

Operating-/Indication part

Lens material	Plastic
Lens colour	red
Lens profile	Mushroom
Lens optics	opaque
Lens illumination	non-illuminative

IP-Rating

Front protection	IP65
------------------	------

Connection Method

Terminal	Plug 2.8 x 0.5 mm
----------	-------------------

Actuator

Switching action	Maintained
Housing colour	yellow
Housing material	Plastic

Switching element

Switching voltage	250 V AC/DC
Switching current	5 A
Switching system	Slow-make switching element
Contacts	1 NC + 1 NO
Contact material	gold-plated silver

Illumination

LED colour	
------------	--

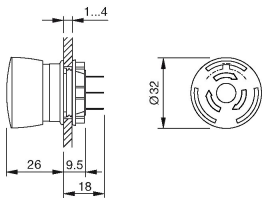
Function

Emergency stop switch	
-----------------------	--

EAO – Your Expert Partner for Human Machine Interfaces

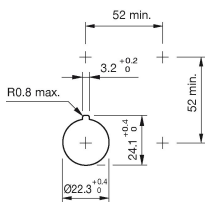
84-5030.0020 - Emergency-stop switch complete, foolproof EN IEC 60947-5-5

Dimensions

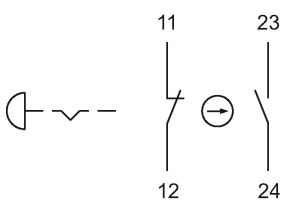


P = Plug-in terminal 2.8 x 0.5 mm

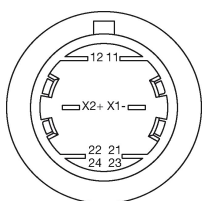
Mounting cut-outs



Wiring diagram



Component layout



Additional information

Twist to unlock clockwise

Position indication ring black

Application as per DIN EN ISO 13850 and EN 60204-1

Standard version: Flat ribbon-cable length 300 mm or plug-in terminal 2.8 x 0.5 mm

Other options on request: Customisation of flat ribbon-cable and connectors

Legend

Contacts: NC = Normally closed, NO = Normally open