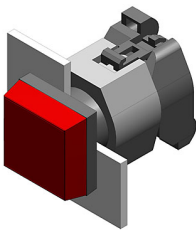


EAO – Your Expert Partner for Human Machine Interfaces

704.200.7 - Indicator actuator full-face illumination

704.200.7 - Indicator actuator full-face illumination



Attention: The preview is based on a sample product. This can differ from your current configuration.

Mounting

Mounting cut-out Ø 22,3 mm
Design raised

Front

Front shape square
Front bezel material Plastic
Front bezel colour grey
Front dimension 30 mm x 30 mm

Other Attributes

Weight 0,050 kg
Marking cap colour white
Marking cap optics translucent
Marking cap illumination illuminative

Operating-/Indication part

Lens cap colour colourless
Lens cap optical effect transparent
Lens cap material Plastic

IP-Rating

Front protection IP65

Connection Method

Terminal Screw terminal

Actuator

Housing material Plastic
Housing colour grey

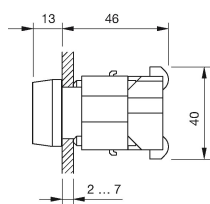
Function

Indicator

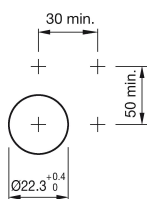
EAO – Your Expert Partner for Human Machine Interfaces

704.200.7 - Indicator actuator full-face illumination

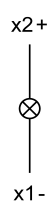
Dimensions



Mounting cut-outs



Wiring diagram



Additional information

Filament lamp or LED