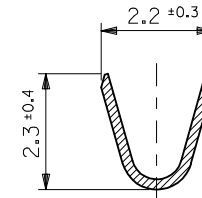
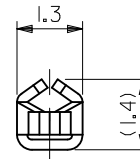
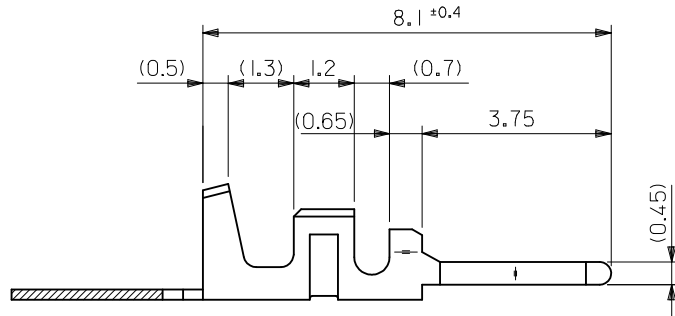


SECT. A-A



SECT. B-B



NOTES

1. USE WITH HOUSING : 5295-N
2. P. C. BOARD HOLE DIM. : $\varnothing 0.8 \pm 0.05$
3. P. C. BOARD THICKNESS : 1.0 - 1.6

MATERIAL
BRASS
(THICKNESS : 0.2)

TIN 1 μ m MIN. OVER NICKEL 1 μ m MIN.	39-00-0444	5294PT2L7F	LOOSE
TIN-LEAD(90-10) 5 μ m MIN. OVER NICKEL 1.3 μ m MIN.	39-00-0234	5294PT2L	LOOSE
	39-00-0233	5294PT2	CHAIN
TIN-LEAD(60-40) 5 μ m MIN. OVER COPPER 2.5 μ m MIN.	39-00-0226	5294PTL	LOOSE
	39-00-0225	5294PT	CHAIN
PLATING	EDP NO.	ENG. NO.	FORM

REVISION DESCRIPTION EC NO: J2016-0069 DRWN: TAKAIKE 2015/07/23 CHKD: APPR: NUKITA 2015/08/06	GENERAL TOLERANCES (UNLESS SPECIFIED)		DIMENSION STYLE MM ONLY		SCALE	DESIGN UNITS METRIC	THIRD ANGLE PROJECTION
	0.25 UNDER	±0.03	DRAWN BY	DATE	TITLE		
	0.25 OVER 0.5 UNDER	±0.05	HIRAMOTO	1992/06/26	2.0 BOARD IN CONN CRIMP PIN		
	0.5 OVER 1.0 UNDER	±0.1	CHECKED BY	DATE			
	1.0 OVER 10 UNDER	±0.2	YYAMADA	1992/06/29			
10 OVER 30 UNDER	±0.25	APPROVED BY	DATE	DOCUMENT NO.		SHEET NO.	
30 OVER	±0.3	MENOMOTO	1992/06/29	SD-5294PT*		1 OF 1	
ANGULAR ±3 °		MATERIAL NO. 999999999		THIS DRAWING CONTAINS INFORMATION THAT IS PROPRIETARY TO MOLEX INCORPORATED AND SHOULD NOT BE USED WITHOUT WRITTEN PERMISSION			
DRAFT WHERE APPLICABLE MUST REMAIN WITHIN DIMENSIONS							