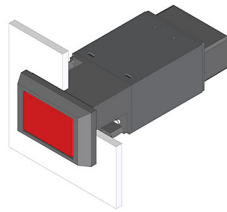


EAO – Your Expert Partner for Human Machine Interfaces

22-211.014 - Illuminated pushbutton actuator

22-211.014 - Illuminated pushbutton actuator



Attention: The preview is based on a sample product. This can differ from your current configuration.

Mounting

Mounting cut-out Design 22 mm x 30 mm
flush

Front

Front dimension 24 mm x 36 mm
Front bezel colour black
Front bezel material Plastic
Front shape rectangular

Other Attributes

Weight 0,032 kg

Operating-/Indication part

Lens illumination

IP-Rating

Front protection IP65

Connection Method

Terminal Plug 6.3 x 0.8 mm

Actuator

Switching action Momentary
Housing colour black
Housing material Plastic

Switching element

Switching system Snap-action switching element
Contacts 1 NO
Switching voltage 400 V AC
Switching current 10 A
Contact material Silver

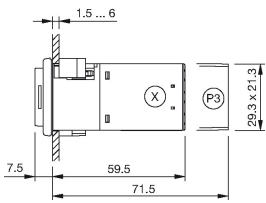
Function

Illuminated pushbutton

EAO – Your Expert Partner for Human Machine Interfaces

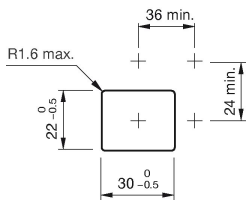
22-211.014 - Illuminated pushbutton actuator

Dimensions

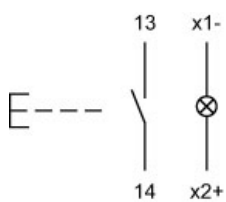


P3 = Plug-in terminal 6.3 x 0.8 mm

Mounting cut-outs



Wiring diagram



Legend

Contacts: NO = Normally open
Switching action: B = Momentary