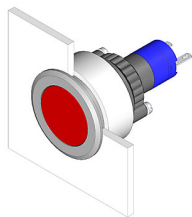


14-040.002 - Indicator actuator



Attention: The preview is based on a sample product. This can differ from your current configuration.

Mounting

Design flush
Mounting cut-out \varnothing 30,5 mm

Other Attributes

Weight 0,050 kg

IP-Rating

Front protection IP67

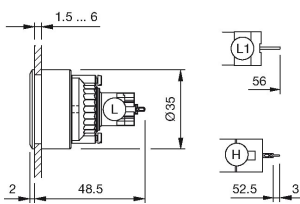
Connection Method

Terminal Solder 2.8 x 0.5 mm

Function

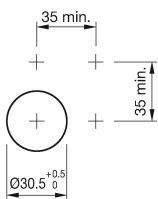
Indicator

Dimensions



L1 = Solder/Plug-in terminal 2.8 x 0.5 mm

Mounting cut-outs



Wiring diagram

