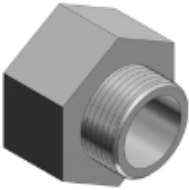


1245

## ***T&B Industrial Fitting***

Male enlarger made of malleable iron with a size of 1/2 to 3/4 in.



### General

Type:	Rigid and Intermediate Metal Conduit Fittings
Application:	To couple and effectively bond threaded ends of rigid metal conduit/intermediate metal conduit where neither length of conduit can be rotated
T&B UPC:	78621001245
T&B Status:	M
Material:	Malleable Iron